

Network Video Surveillance System

SVS9000 User Manual

Announcement

Thank you very much for purchasing our products. If you have any question or need, please feel free to contact our customer service department at any time.

The manual applies to SVS 9000 video surveillance client software.

The manual may contain some technical inaccuracies and printing errors. The manual will be updated occasionally according to the improvements or updates of our products without notice. All updates will be added in the new version of the manual.

We will improve or update the products or programs described in this manual. If there is any inconsistency between the description in the manual and the actual product, the actual product shall govern. If there is any question or dispute in the manual, the final interpretation of our company shall prevail.

Precautions

The video surveillance client software is very powerful, with features like multi window, multi user, voice intercom, alarm center, video recording, and can be compatible with other extension products and can also connect with your PC or other devices directly.

The video surveillance client software aims to connect with multi devices of different types or models, (such as IPC, SVS 9000, DVS, etc.). This manual only introduces the operation of the professional video surveillance system client software. Please read the related product manuals about the function or setups of the specific devices.

This manual is provided for the users of SVS 9000 video surveillance client software. You have to be equipped with some knowledge and experience of the basic operation of the related devices (such as IPC, SVS 9000, DVS, etc.)

Content

1	Product Overview	3
1.1	SVS 9000 brief induction.....	3
1.2	Main functions and Features	3
1.3	System Requirement	3
2	Installation and Uninstallation	4
2.1	Software Installation	4
2.2	Software Uninstallation.....	6
3	System Instructions	7
3.1	System login.....	7
3.2	Exit System	8
3.3	Main Interface	9
3.4	Commonly used function button	9
3.5	Video.....	10
3.6	User Authentication	10
3.7	Real-time Video Display and Control.....	11
3.7.1	Display Mode Switch.....	11
3.7.2	Single Screen Display	11
3.7.3	Full Screen Display	12
3.7.4	PZT Control Functions.....	12
4	System Configuration	14
4.1	Device Setup	15
4.2	Local Settings.....	19
4.3	Local Alarm linkage Setting	24
5	Playback.....	28
5.1	Local Playback.....	28
5.2	Playback.....	29
5.3	Local backup.....	29
6	Event query	32
7	Electronic Map.....	34
7.1	Creat map	35
7.2	IPC Location settings	36
7.3	Map level settings	38
7.4	Alarm input setting-up Settings.....	40
7.5	Delete layout point	41
7.6	Delete electronic map.....	42
Appendix-FAQ	43
1-1	How to set Auto-Login for SVS 9000?.....	43
1-2	How to set to start automatically?.....	43
1-3	[Device in the group] not search devices?	43
1-4	Images are not displayed properly, how to solve?.....	43
1-5	No sound when listening?.....	44
1-6	How to calculate the storage capacity?.....	错误!未定义书签。

1 Product Overview

1.1 SVS 9000 brief induction

Spatially-integrated SVS 9000 full name: Security Video System network Video server center. Management is a small batch of safety monitoring equipment management software. Paired device, can support other manufacturer's equipment of access and watch multiple batch equipment real-time surveillance video and playback, also provide user management and alarm functions, besides realized the NVR docking, can operating the NVR video files.

1.2 Main functions and Features

【Real-time video display】 Can be real-time display monitor within 1-25 road, can realize single screen, 4, 6, 8, 9, 16, 17, 19, 22, 25, according to the image segmentation support round tour show.

【Long distance picture recording】 Omit.

【Local video】 Can be according to the set of video time automatic video or receive the alarming signal from the video server to alarm video.

【Real-time video image capture】 Real-time image capture is used for real-time shooting images of the auxiliary function, it will be a dynamic image of the single frame image in BMP or JPG image format preserved, it can captured the monitoring or playback images .

【Audio monitoring and intercom】 Between the client and the front-end equipment can be two-way voice transmission. The client can monitor audio of front-end equipment, at the same time, the client can send audio to the front-end equipment, and they can realize the intercom.

【Alarm processing】 The client receives the alarm signal sent by a front-end equipment, the client will be set up according to start the video, and according to set can display the electronic map and display real-time image.

【Electronic Map Display】 Electronic map includes monitoring scene name and the front-end equipment in this scenario, click on the electronic map icon on the distribution of front-end video equipment, which shows that the real-time image of the device.

【Local playback】 Can retrieve local video playback equipment at any time in the video file.

【Management】 Can add users and made user permissions Settings.

【Data copy】 Is mainly about the software itself parameters (time, log save parameters such as path) and video file backup.

1.3 System Requirement

Operating system: supports Windows 2000 / XP / 2003 / Vista / 7 operating system;

Internet Explorer: support Internet Explorer 6.0 or above;

The central processing unit (CPU) : the Intel Pentium dual-core 2.4 G (including) above;

Mail memory: 2G(including)above;

Network card: 100/1000M self-adaption;

Hard disk: 250G(including)above;

Graphics: discrete graphics and support directX 8.0 c and above;

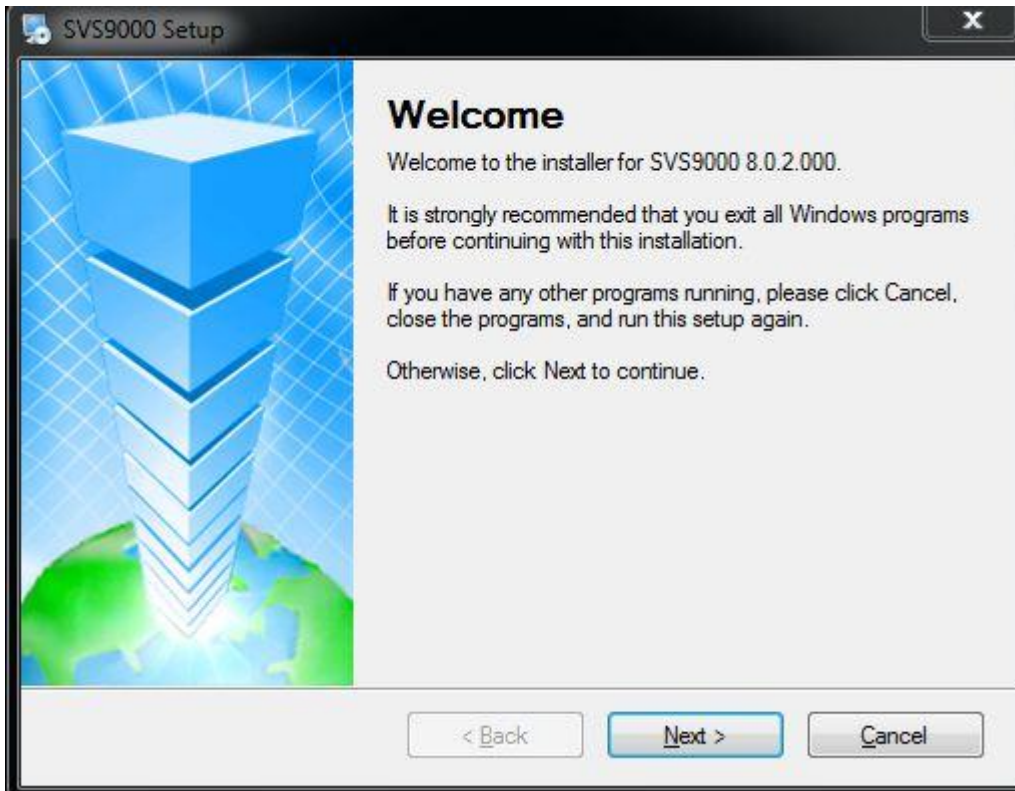
Display: 14 inches(including)above color LCD or CRT displays, resolution 1024 x 768 or above.

Notice: if the access of the large number of IPC, please according to need to adjust, CPU, memory, graphics and PC configuration.

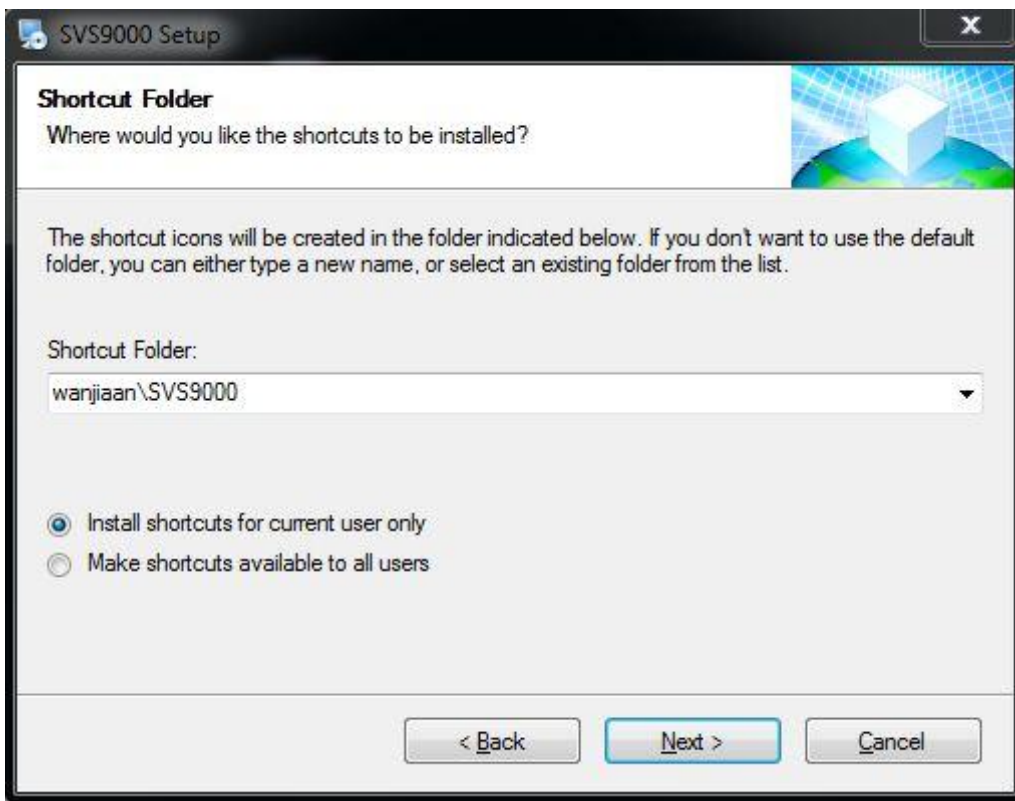
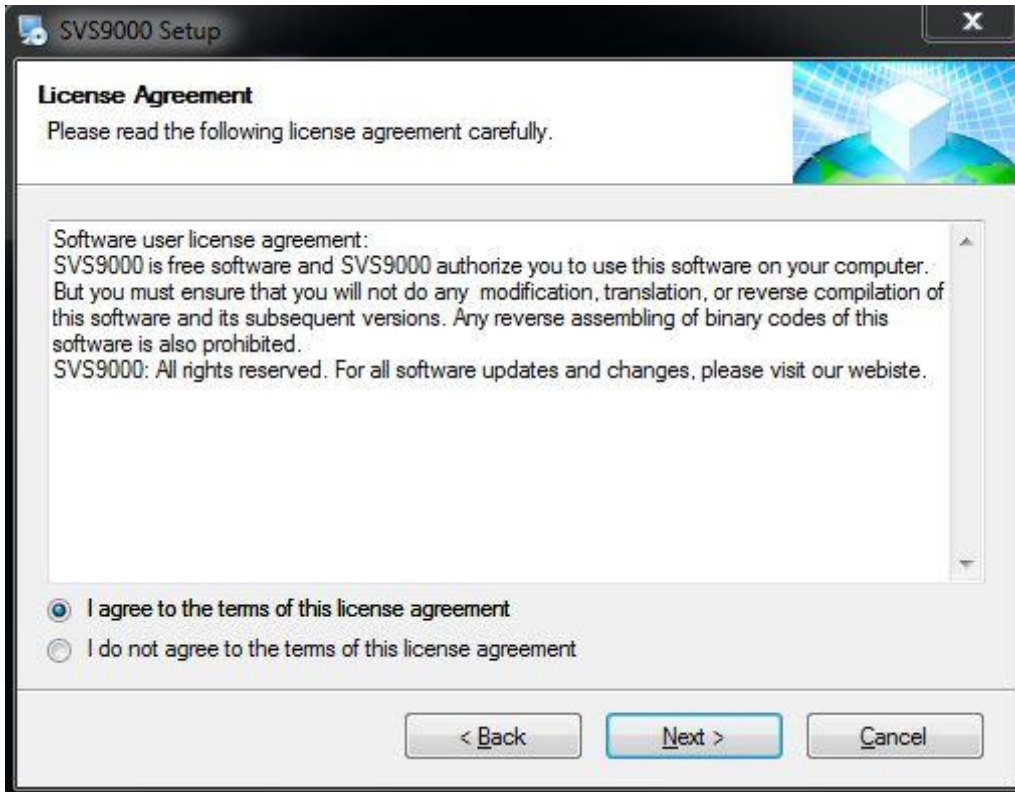
2 Installation and Uninstallation

2.1 Software Installation

Step 1: Please confirm the CD-ROM contains the SVS9000.exe file, then install it step by step, the installation interface will display as follows:

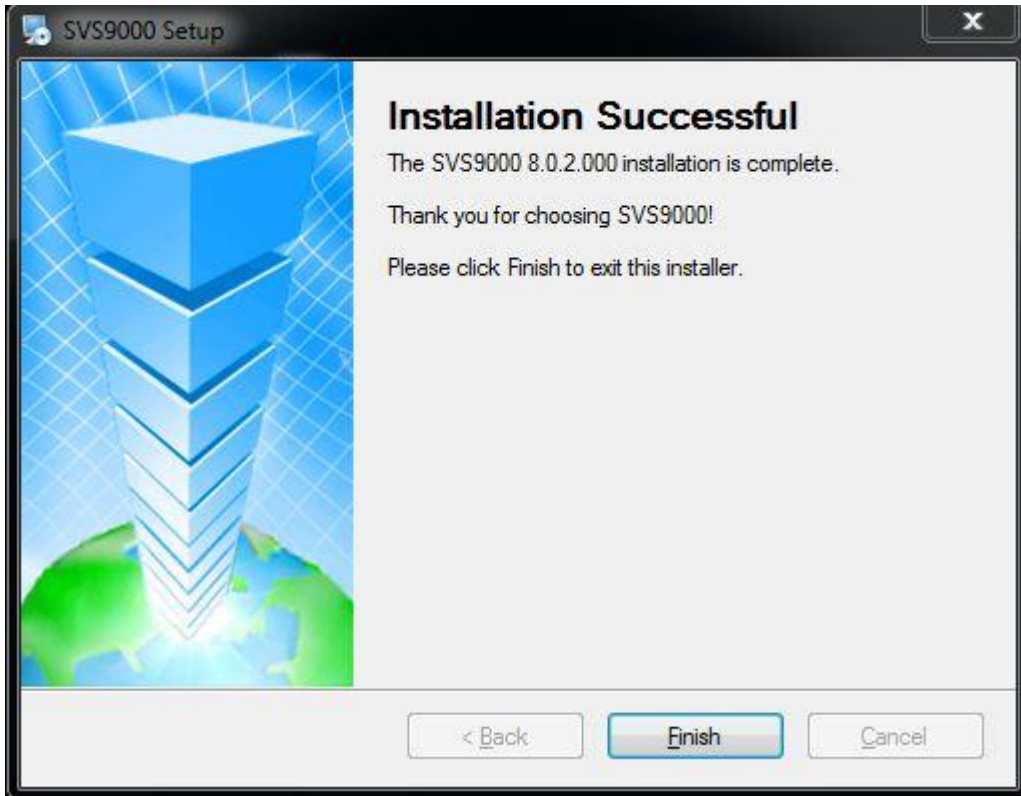


Step 2: According to the direction, click the "next" and select an installation directory. The system default directory is as follows:



Step 3: Here you can set a desired installation directory. Then click the "next" according to the directions.

Step 4: Click the "finish" to get the installation completed.

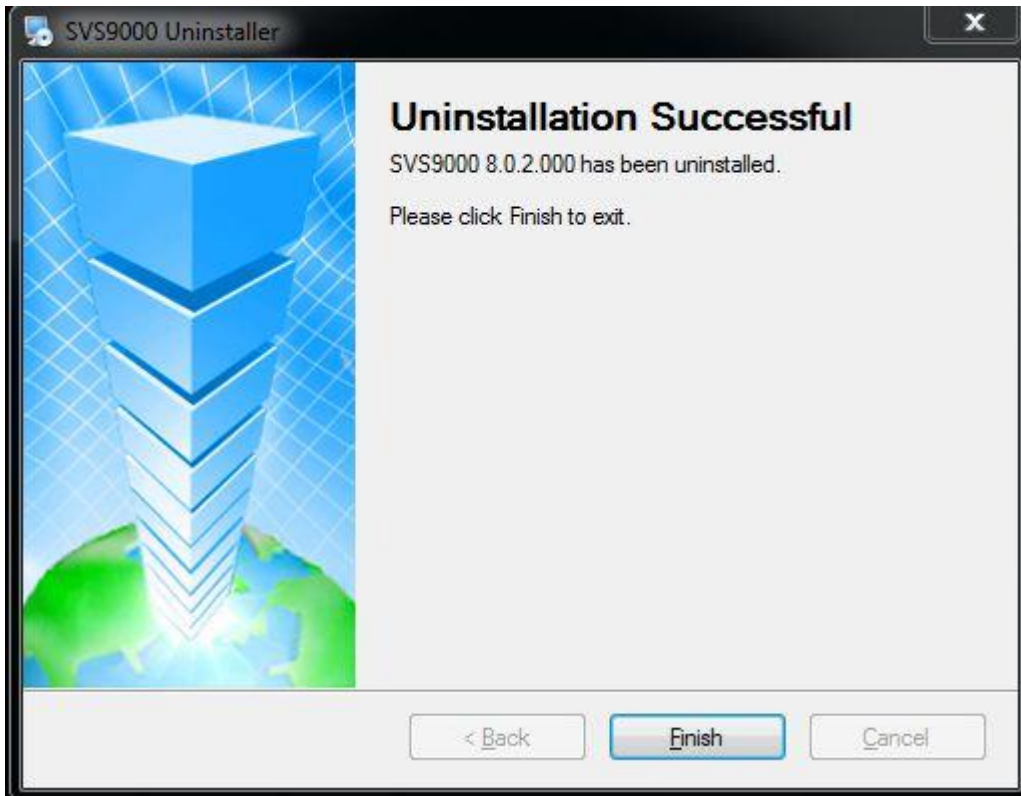


2.2 Software Uninstallation

You can uninstall the software by using Add or Remove Programs in Control Panel or get to the Start Menu Program→SVS 9000→Uninstall SVS 9000. As follows, click "next" according to the direction to complete the uninstallation.



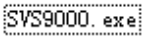
Click "finish" as shown in the picture:



3 System Instructions

3.1 System login



1) Double click the icon  SVS 9000 on your desktop to open the professional SVS9000 video surveillance system login box and it will display as follows.



【User Name】 Program login user name

【User Password】 The corresponding user's login password

【Remember】 If checked, the automatic login next time can be realized

【Login】 Verify the user name and password and open the main interface of the program

【Logout】 Cancel the login to log out the program

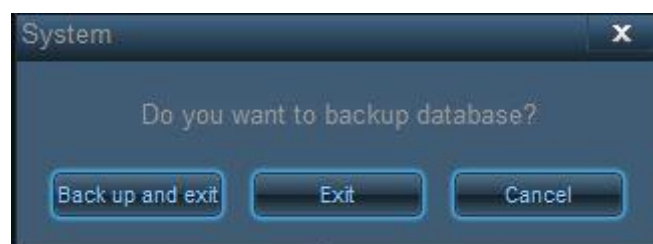
【Chang Password】 You canchange the current user's password

Remarks: To run the program for the first time the default user name isadmin, namely Super User, the password is 123456.The Super User cannot be deleted.Only the Super User can add, modify, and delete other users. For security, after the first login, please change the Super User's password.“Saving the password” is a small function for the convenience. To be on the safe side, please do not use this feature on public computers.

2) Input the correct user name and password. Click “OK”. After the System verifies the user name and the password, you will enter the main interface of SVS 9000.

3.2 Exit System

In the “Menu Bar”, click the “Exit”, then click the “Exit directly” in the Pop-up Dialog Box, namely exit without saving the current settings. “Backup and exit”, namely save the current settings then exit. “Cancel”, namely cancel the logout.



3.3 Main Interface



SVS 9000 main interface in details is following:

1	Menu	From left to right: log out、setup、event query、replay、electronic map、review、lock/unlock the user;
2	Device list	list: Mainly displayed in a tree by adding the IPC devices, the default is divided into a "local" and "platform" two root; Grouping:omitted
3	PTZ control function	Mainly aimed at the IPC control with PTZ
4	Commonly used function button	From left to right: electronic amplification ,volume control、video、capture、intercom、selection screen、full screen、and switch picture
5	Video display channel	Used to display the IPC real-time video
6	PC resource	Show the whole PC occupancy resources, including CPU、RAM、NET、DISK
7	Current user information	Display the current user and system time

3.4 Commonly used function button



- 【1】** Electronic zoom, digital zoom in/out the video image;
- 【2】** Volume, when open audio monitoring ,can adjust the volume;
- 【3】** Record, you can choose to store your video file to the local;
- 【4】** Snapshot ,real time video can be manually capture by.JPG or BMP format screenshots;
- 【5】** Audio communication, you can turn on or off the audio;
- 【6】** Choose screen, can control the preview picture ,single selection screen, and preview picture 4,6,8,9,16,17,19,22,25 split-screen

display ;

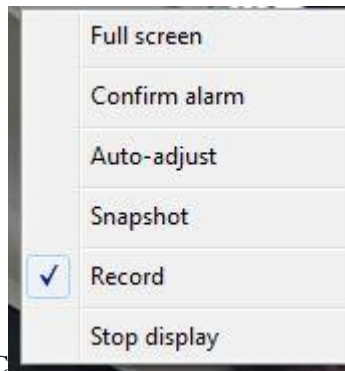
【7】 Full screen, after set up that you can start to full screen ;

【8】 Select group, can choose different ways on the preview screen, the maximum is 25

3.5 Video



In the video area selected a real-time video, right-click on the selected video screen, system pop-up menu as shown in the figure below: full screen, confirm the alarm, automatic adjustment, screenshots and videos, disconnect the equipment operation.



【1】 show the name of the IPC

【2】 show the date time of the IPC

In the right-click functions stated below:

【Full screen】 started, you can start to full screen

【Confirm alarm】 open the alarm function

【Auto-adjust】 after selecting the system automatically adjust the display scale to 4:3

【Snapshot】 click the snapshot, System will snapshot the current preview video to JPG or. BMP format, and save

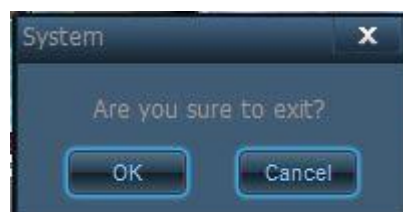
【Record】 manual record the preview video

【Stop Display】 disconnect the current video preview

3.6 User Authentication

In order to prevent the irrelevant personnel to manipulate, the software can be locked for software:

The first step: in the toolbar: click on the user authentication button, as below;



The second step: click "Ok" button in the pop-up dialog box, you can lock screen, the button as shown in figure:



The third step: to unlock, to once again, click " user authentication " button, as shown in figure:



Step 4: in the user name and password input box, enter the correct user name and password can remove lock screen.

3.7 Real-time Video Display and Control

SVS 9000 real-time video control function can realize the control of the display screen, PTZ control, and the real-time video image processing.

3.7.1 Display Mode Switch

SVS 9000 support 1, 4, 8, 8, 9, 16, 25 split screen and full screen operations display mode, the system default is the 16ch screen mode; user can switch display modes according to the split screen button below.



3.7.2 Single Screen Display

Choose a split screen, as below: in single screen display mode, can set playback fluency and coding quality according to the selected video channel separately



3.7.3 Full Screen Display

Double-click any preview screen to full-screen display the image, click again this screen to exit full screen display,as below:



3.7.4 PZT Control Functions

3.7.4.1 PTZ control

Click the PTZ control button, control interface as below:



- 【1】 Direction control button, can control eight direction respectively: up, down, left, right, right-up, right-down, left-up, left-down and middle button for automatic scanning;
- 【2】 Aperture adjustment, the left button is expanding, the right button is narrow;
- 【3】 Zoom adjustment, the left button is zoom in, the right button is zoom out;
- 【4】 Focus adjustment, the left button is focus +, the right button is focus -
- 【5】 Speed adjustment, adjust the PTZ movement speed at the range of 5 ~ 63;
- 【6】 omitted;
- 【7】 omitted;

3.7.4.2 Preset

Click the “preset” button, Interface shows as below:



Preset Position Setup: You can mark the preset position of PTZ IPC, maximum to 256 positions. If you want to pick up any position, please select the “Number” of the position, then click “call”.

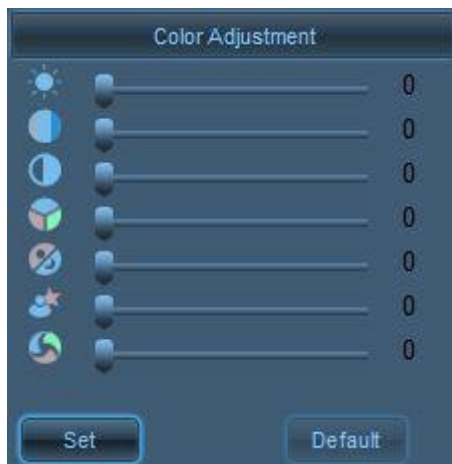
3.7.4.3 Patrol

Click the button of “Patrol”, interface shows as below:



3.7.4.4 Color Adjustment

Click the “Color Adjustment” button, Interface shows as below:

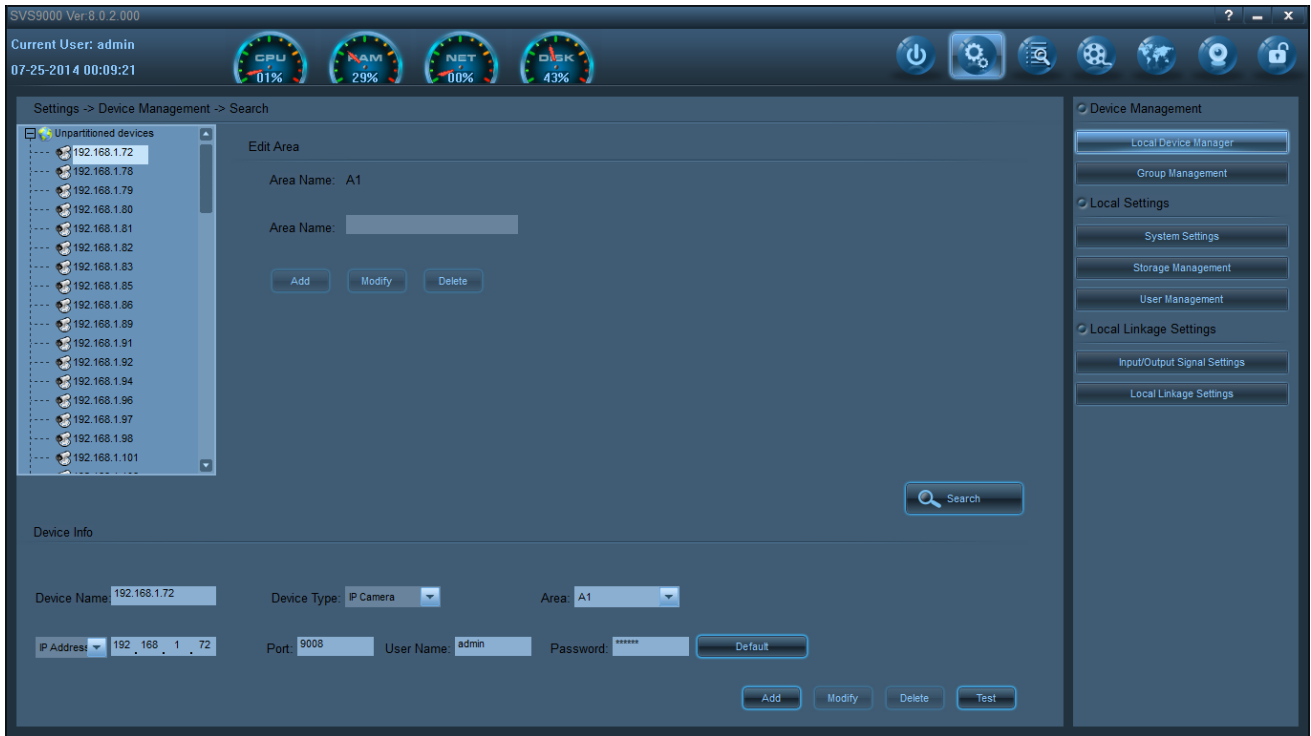


Color Adjustment: It is mainly for PTZ IPC color adjustment, click “Loading”, it will load all the specifications of this IPC.

- 【1】 Brightness, adjustable range from 0-100;
- 【2】 Chroma, adjustable range from 0-100;
- 【3】 Contrast, adjustable range from 0-100;
- 【4】 Ellipsis;
- 【5】 Ellipsis;
- 【6】 Ellipsis;
- 【7】 Ellipsis;

4 System Configuration

【Setup】 Including: Device Setup, Local Setup, Local Alarm Setup, Interface shows as below:

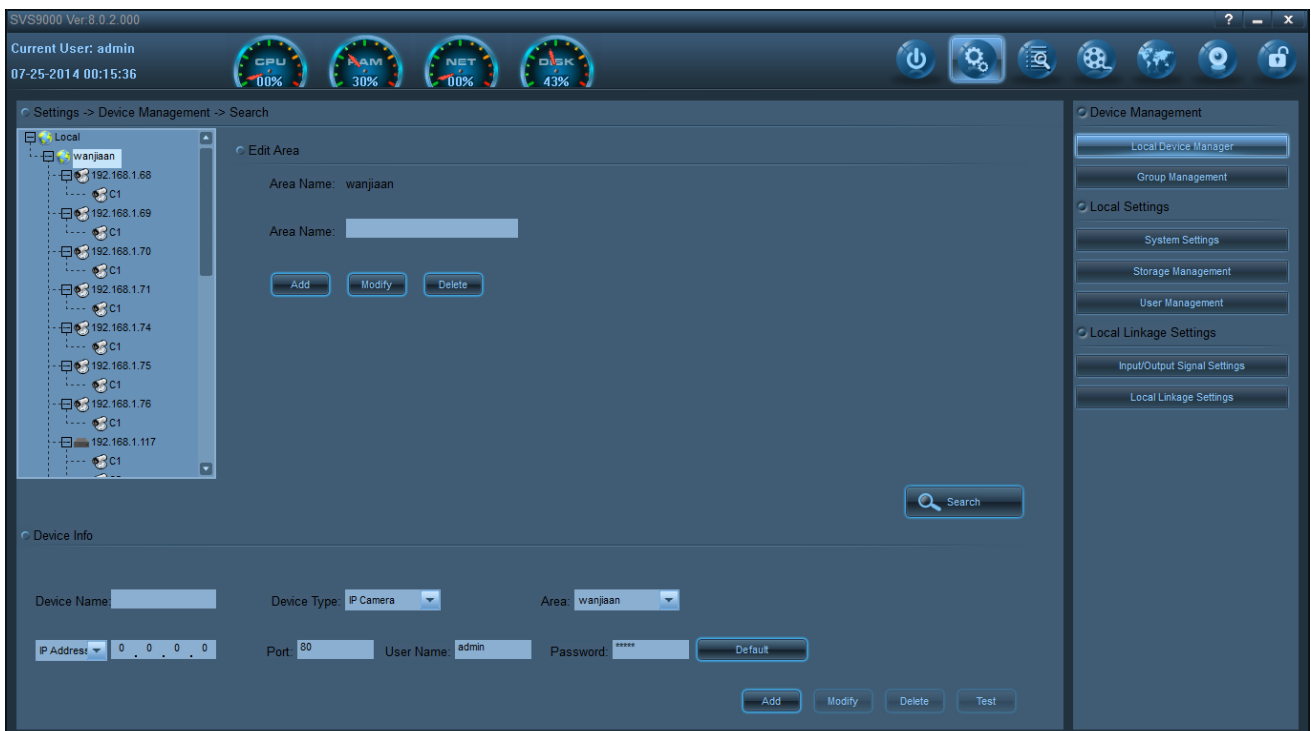


4.1 Device Setup

【Device Management】 There are 2 functions, respectively: **【Local Device Management】** and **【Platform Device Download】**.

4.1.1 Local Device Management

Click “Local Device Management” button, the system popup same as the picture below:



Local Device Management: It is mainly for IPC and NVR, including add、Delete、Modify and Search.

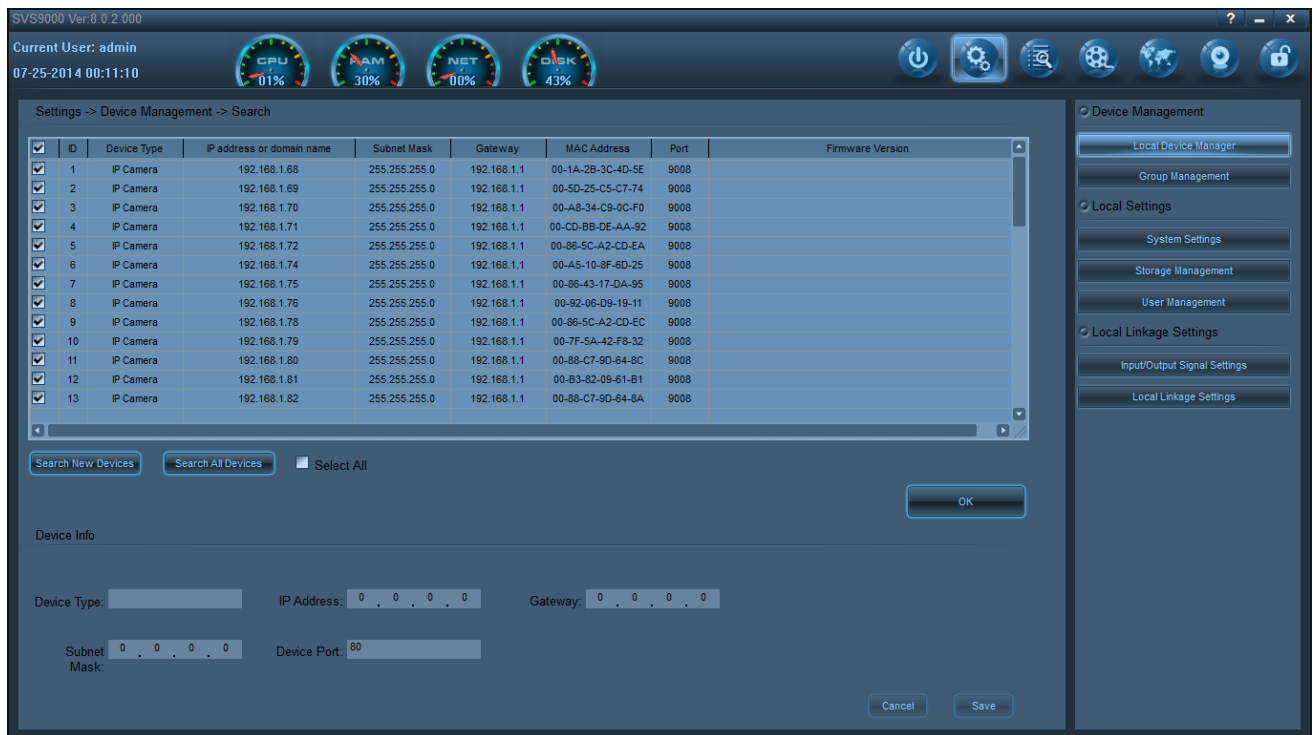
【1】 Device List Area: It shows the area of the IPC and NVR which has been added or not.

[2] Group Management Area: You can add custom group from “Local” or “Platform”.

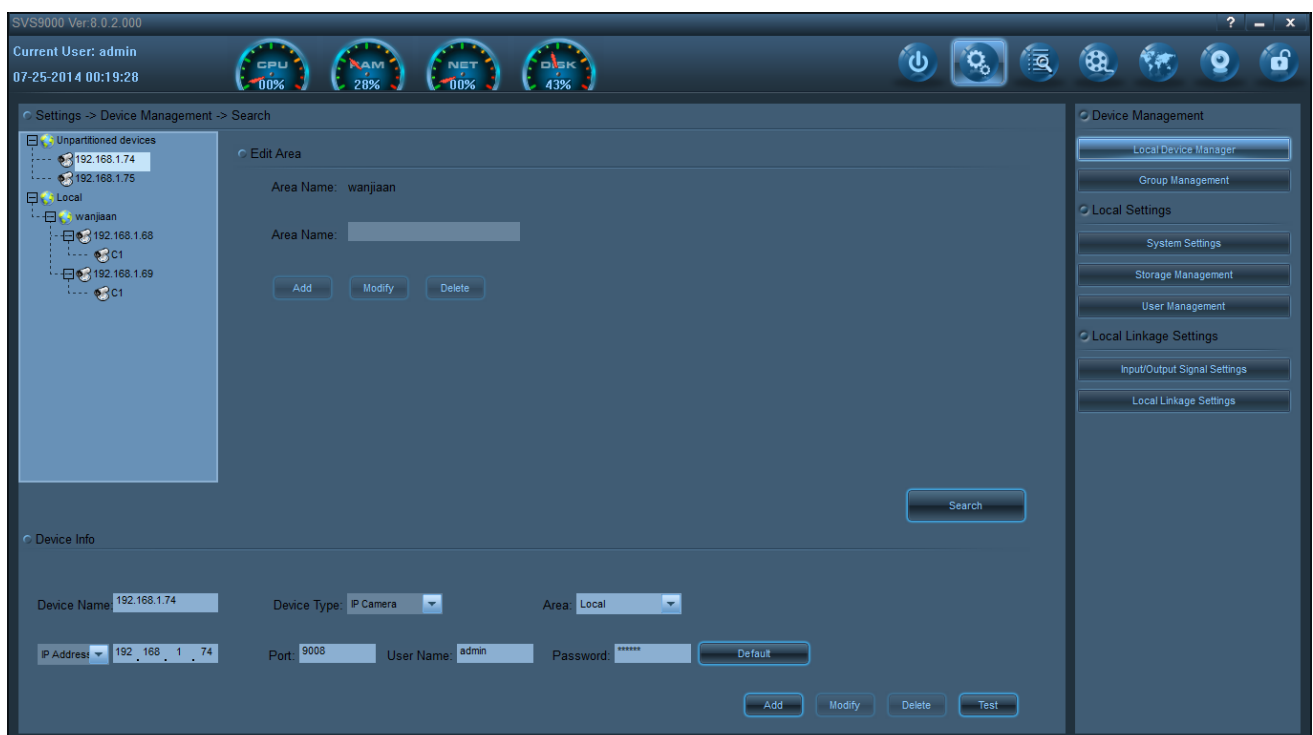
[3] Device Info Area: It shows some IPC basis information, including: Device Name、 Device Type、 Select Area、 IP Address、 Port Number、 User Name、 Passport, you can also add、 delete、 modify and search in this area.

Add Device Steps as below:

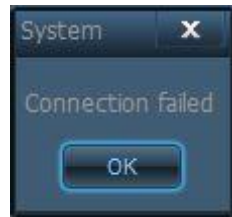
Step 1: Click “Device Search”, there are 2 ways of search: One is “Search New Added Devices”, it only search the new added devices, no search for the devices which have been added before; another is “Search All Devices”, it will search all devices in the Local Area Network. You can choose any one, same as below:



Step 2: Check the devices you want, then click “Confirm”,(Click “Select All” to add all devices), you will see all the devices in root directory as below:

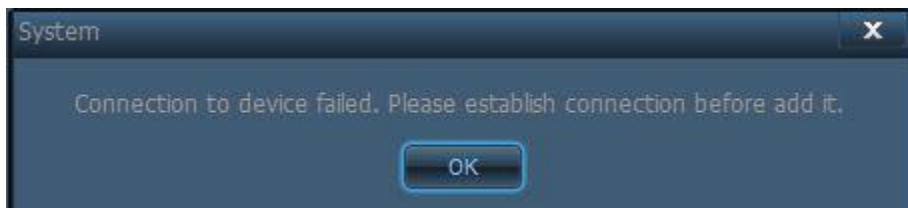


Step 3: Choose one of the device in “Non-partitioned Devices”, please fill in the right information of “Device Information”: Port Number、 User Name and Passport, if any mistake of the 3 options, you will see the message as below when you click test:



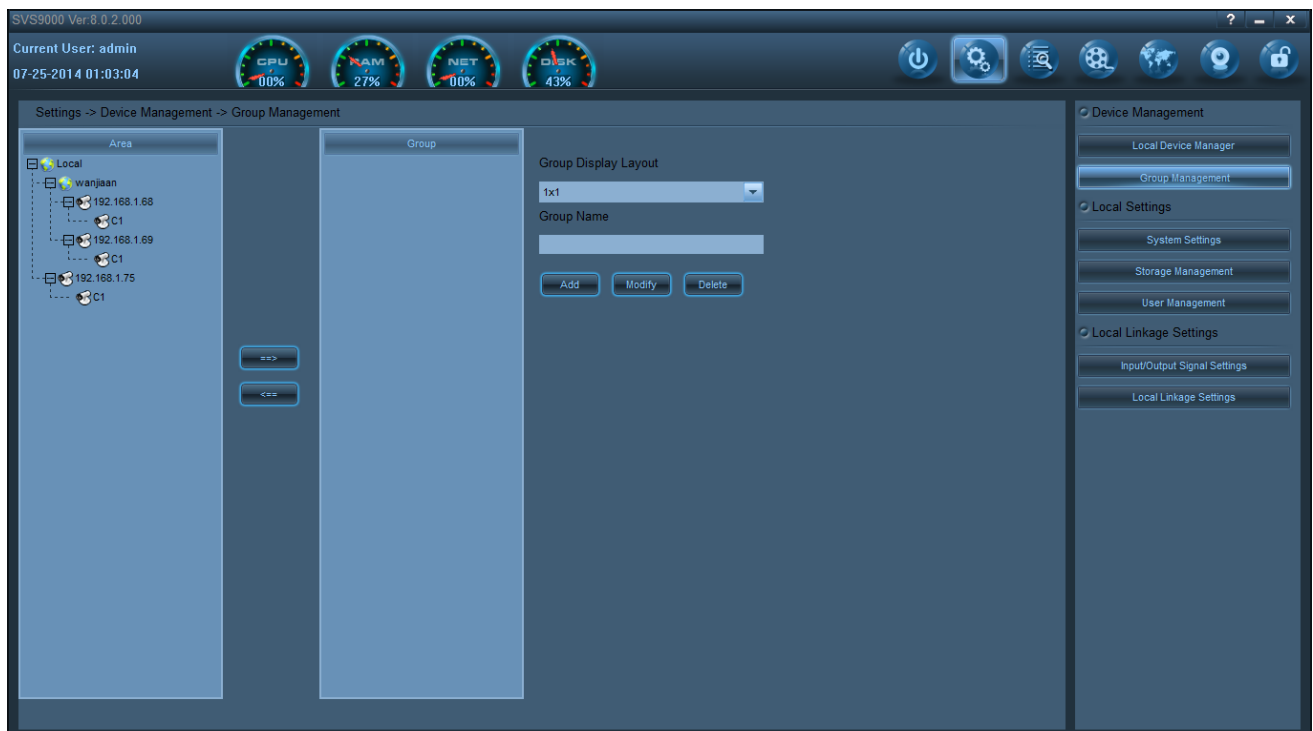
Click “Test” button after you filled the right information, the message shows as below:

Please select the group you want to add after passed test, or you will fail to add:



4.1.2 Group management

Click the group management button, the system pop-up as shown below:



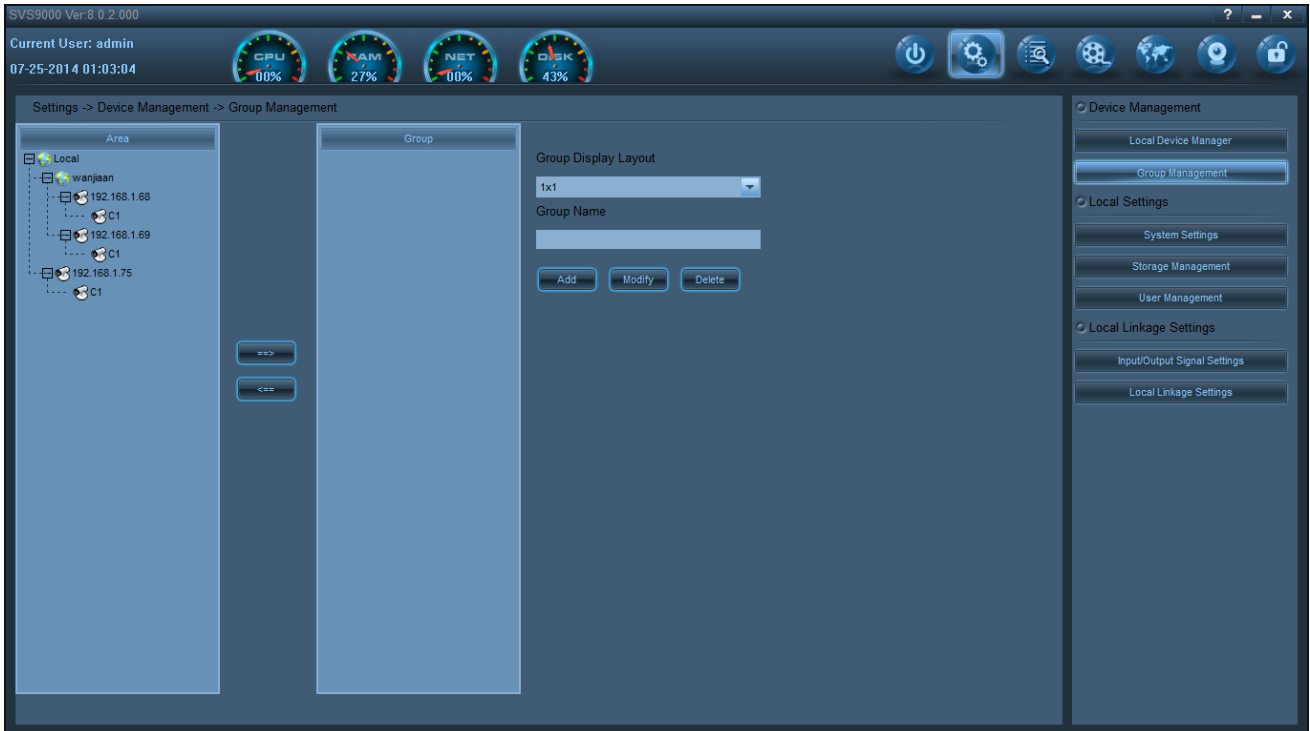
Group management: Grouping management of IPC equipment, and group round robin

- 【1】 to display a list of all equipment;
- 【2】 shows a list of groups;
- 【3】 add a group, including group type and group name;

Add grouping steps are as follows:

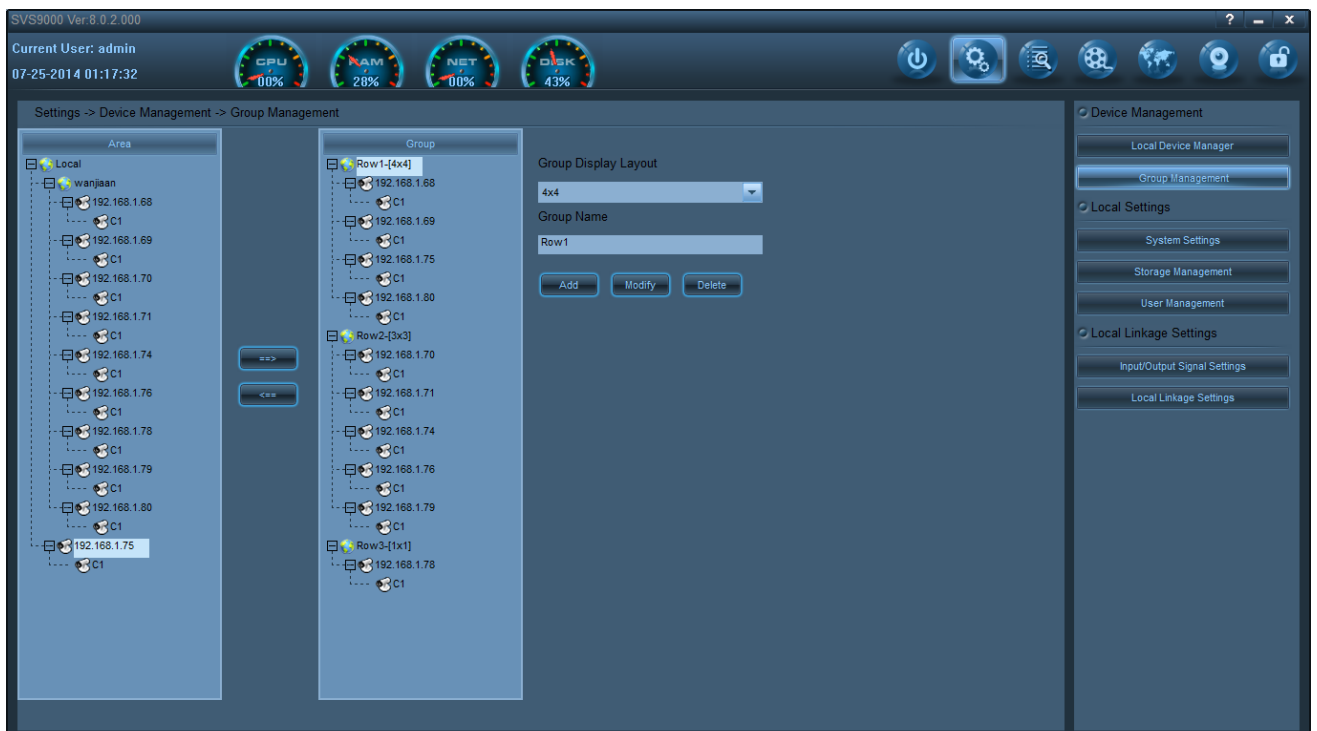
first step: 在【3】Regional "group type" drop-down box, Group type, include 1×1、2×2、3×3、4×4、5×5、5、6、8、17、19、22。Enter a custom name in the "group name", Such as: group 1。

Step second: click the "add", in【2】regions show "group 1" at this time, as following:



If you want to delete the group, just select the corresponding group name in the list,, click the "delete"; if you want to modify the group, just select the corresponding group name in the list, enter a new group name (not modified group type), click "Edit", can be.

The third step: according to the type of group, the group can only add 16 IPC equipment, in the "regional" list, select IPC, and click "add", you can add many group are same, as shown below:



The fourth step: after the grouping, into the preview screen, click on the "group", as shown below:



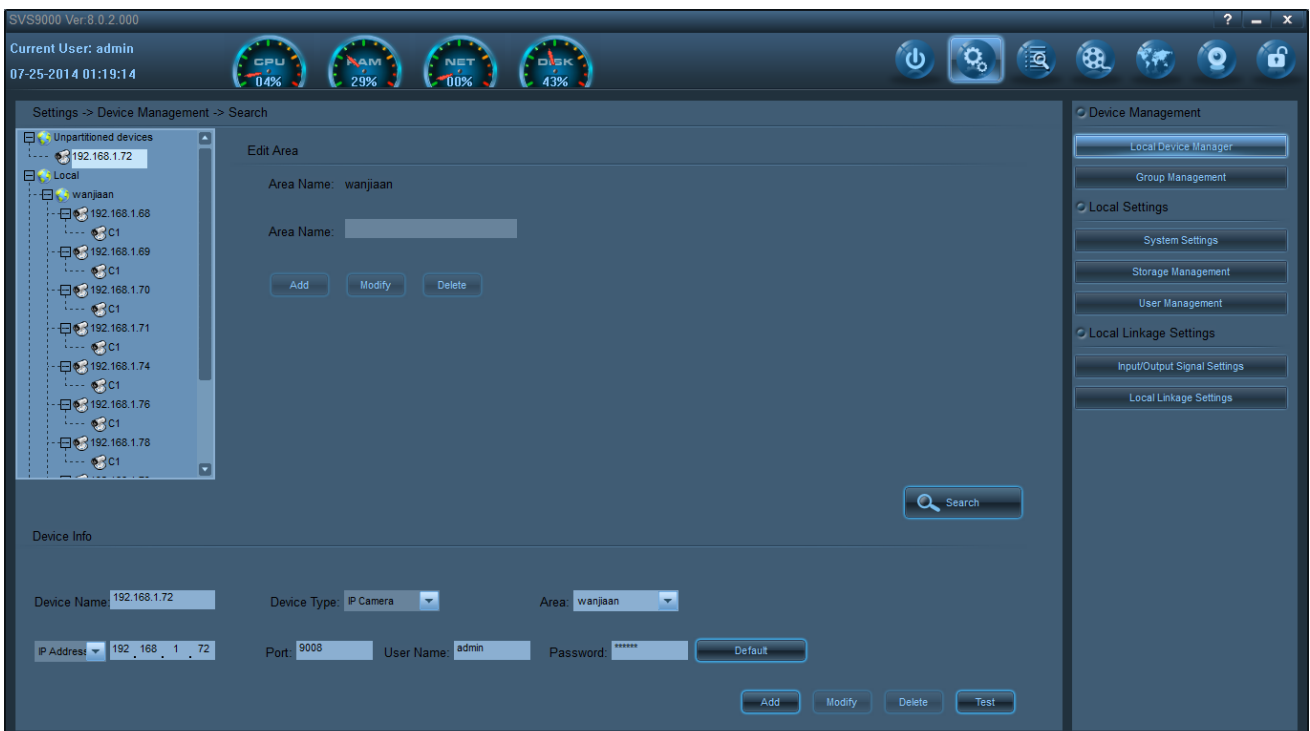
Click on the "tools" in the "group switching", can be grouped round robin (default Round Robin time 15s).

4.2 Local Settings

Local setting have three page function, **System** , **storage management** , **user management** , **set up** .

4.2.1 Local equipment management

Click the system settings button, the system pop-up as below:



[date format] To display the date formatting, year month -day, month -day -year and day -month- year.

[time format] There are two kinds of time format, respectively, 24/12 hours.

[round time] The circular scanning preset point head with equipment time setting, the range is 5 ~ 60s.

[Log storage time] Set up the system log saved time, for one week, two weeks and one month three modes.

[automatic check] Check the system time to set or change.

[Boot automatically] Check after the computer, boot, automatic operation

[Video transmission protocol] N/A.

[Stream mode] Click on the button, you can select the IPC preview the stream for preview, dual stream, single stream and the flow pattern.

[Derived parameters] Click on the button, can be set to your front parameters derived from the specified directory.

[Capture settings] The capture function, out of the picture format is JPG and BMP two format, path can also set the picture preservation.

[Alarm settings] The alarm triggering, there are two modes, respectively, equipment "disconnect alarm output" and "disk full alarm output".

4.2.2 Storage management

Click **[Storage management]** button , The system pop-up as below :

SVS9000 Ver.8.0.2.000
Current User: admin
07-25-2014 01:20:50

Settings -> Local Settings -> Storage Management

Local Device Manager
Group Management
Local Settings
System Settings
Storage Management
User Management
Local Linkage Settings
Input/Output Signal Settings
Local Linkage Settings

Day\Hour	0	1	2	3	4	5	6	7	8	9	10	11	12	13	14	15	16	17	18	19	20	21	22	23
Sun																								
Mon																								
Tue																								
Wed																								
Thu																								
Fri																								
Sat																								

Disk	Total Capacity(GB)	Free space(GB)	Storage path	
<input checked="" type="checkbox"/>	C:	50.007	37.567	C:\MediaRecord\
<input checked="" type="checkbox"/>	D:	139.013	5.099	D:\MediaRecord\
<input checked="" type="checkbox"/>	E:	99.999	89.943	E:\MediaRecord\
<input type="checkbox"/>	F:	39.999	25.050	F:\MediaRecord\
<input type="checkbox"/>	G:	40.000	21.607	G:\MediaRecord\
<input type="checkbox"/>	H:	57.726	57.625	H:\MediaRecord\

Enable planned recording
Enable Cyclic Recording
Alarm Last Duration: 10 (10-180s)
Alarm Prerecord Time: 5 (1-15 s)

Save

Storage management : It is not only a management path to store video, and also video recording function and plans to start.

【Start the video recording function】 Only select "start video recording function" after this equipment , it can open the video, the video, there are two modes respectively, which are main stream video and time stream video.

【Storage settings】 You can specify the video store location, can also choose several hard disk, the default will be the establishment of a "Media Record" folder.

【Launch plan video】 Only check the "launch video", equipment can do regular video

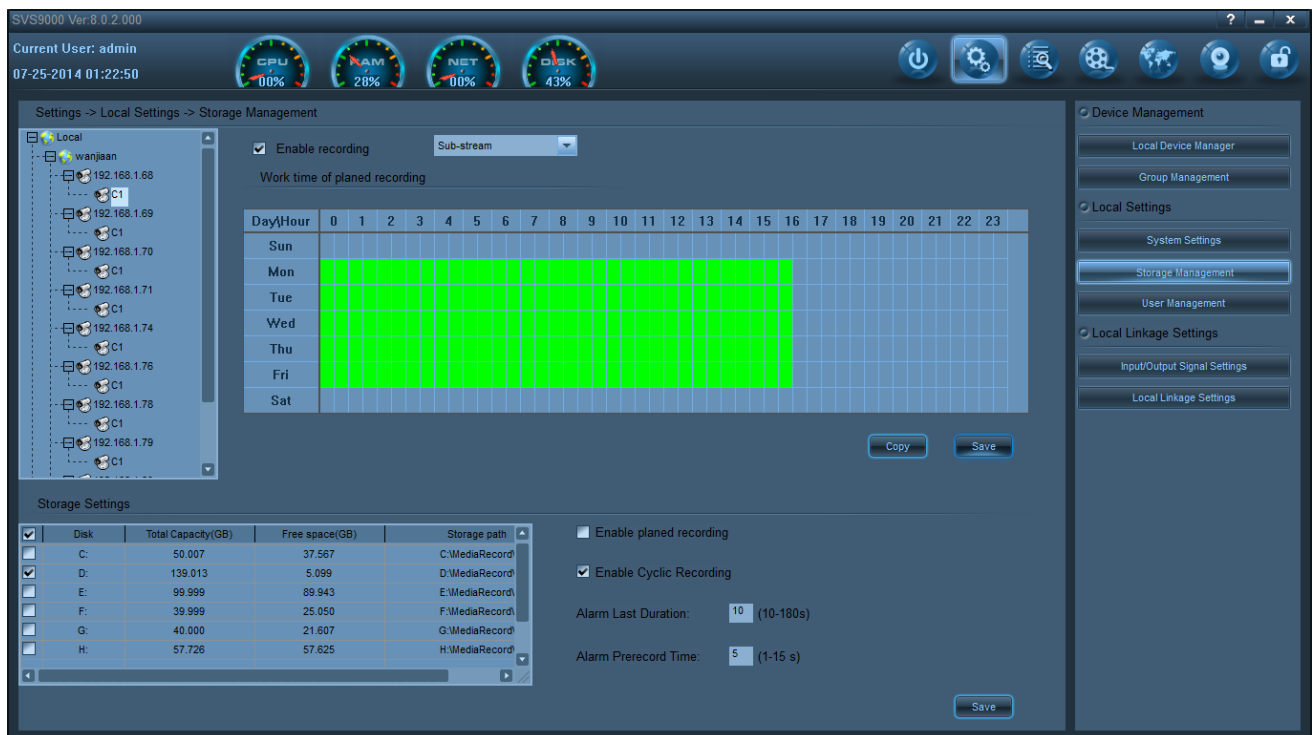
[video loop coverage] after check this, when the disk recording full time, will cover the old video file.

【Alarm duration】 The alarm is triggered, the duration, range is 10 ~ 180S.

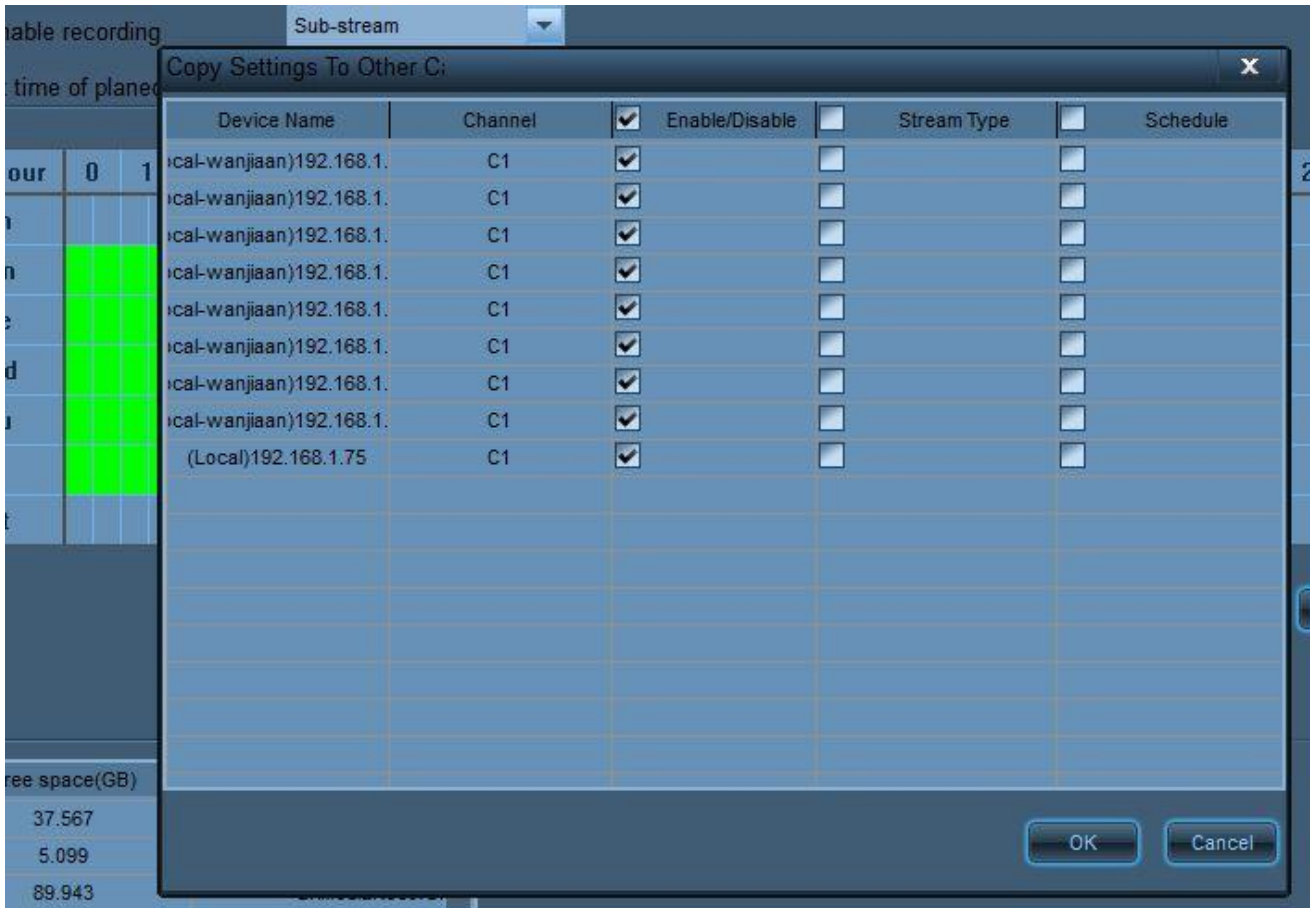
【Alarm duration】 The alarm is triggered, the duration, range is 1~ 15S.

4.2.2.1 Create a program video

The first step: in the "equipment list, double-click the" select a device, select "start video recording function", in the "program recording time setting" through the mouse drag mode, select video in which period of time, after choose, it will turn "red" into "green", and then check the "launch plan video", click the two "save" button, as shown below:

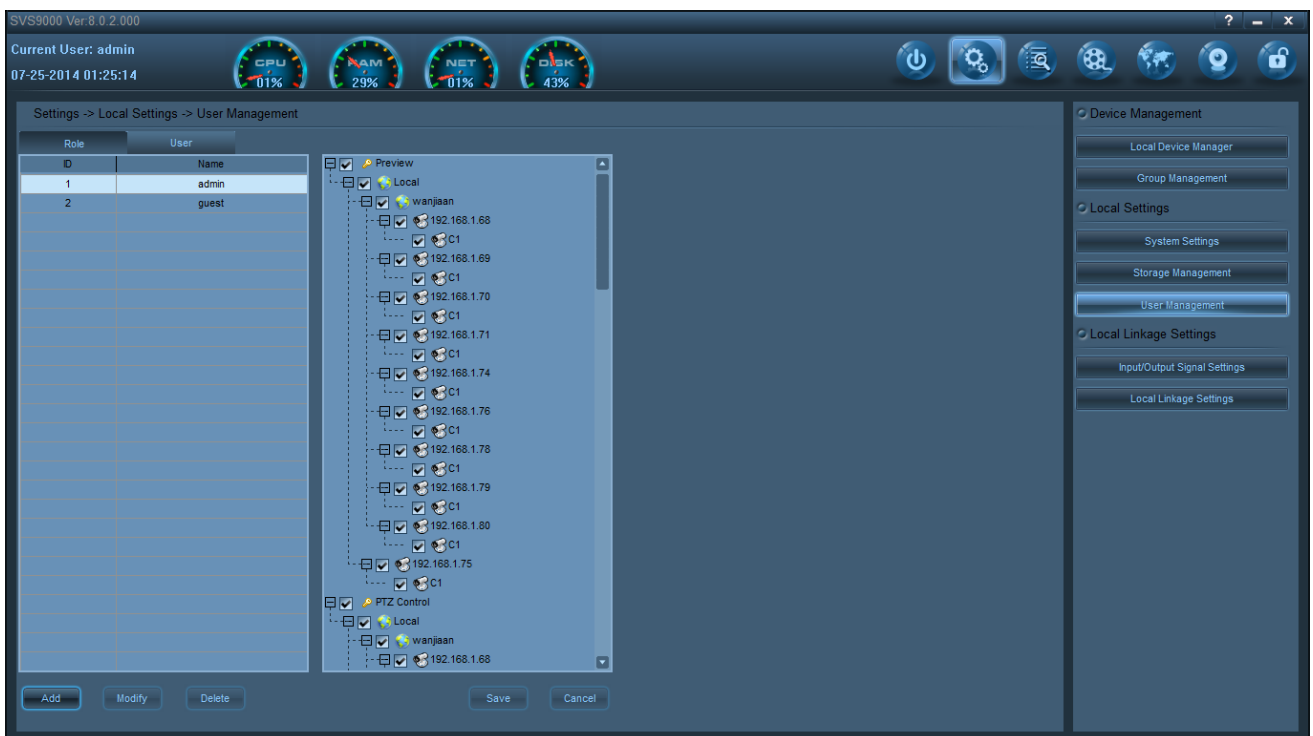


The second step: copy if you need to set the video program to other devices, click the "copy" button, in the pop-up dialog box, choose to copy what equipment, then click "OK", then,as following chart:



4.2.3 User management

Click [local equipment management] button, the system pop-up



User management: including the user add, delete, change, check, and permission assignment of each user, of course, here refers to the super management role.

【1】 The area is displayed all the "role" and "user", "role" is equivalent to a set of permissions, the default is divided into "admin" and "guest", and you can add role; "users" default is "admin" and "guest" two users.

【2】 The region is to display a list of all permissions, it needs to cope with the "role" of operation.

4.2.3.1 Add a new user

Add a new user steps are as follows:

The first step, select [1] region of the "user", click "add" button, fill in user name, role, new password, confirm new password, click "OK", then click "save" button, you can add a new user, as shown below:



[UserName] User Name must be more than six digit, cannot contain /, *,:,,,? ",,<, >, | characters.

[Code] Password must be six or above.

[The user state] N/A.

[Character] in drop-down box, it include custom role name and the default "admin" and "guest".

4.2.3.2 Adding the New Role

Below is how to add the new role

Step one: Select 【1】 area “Client:, Click “ Add” Button ,fill out the Role name



Step Two: Select “Normal” character, then you can tick the [permission in **【2】** area ,after that, click “Save”and “Confirm”button

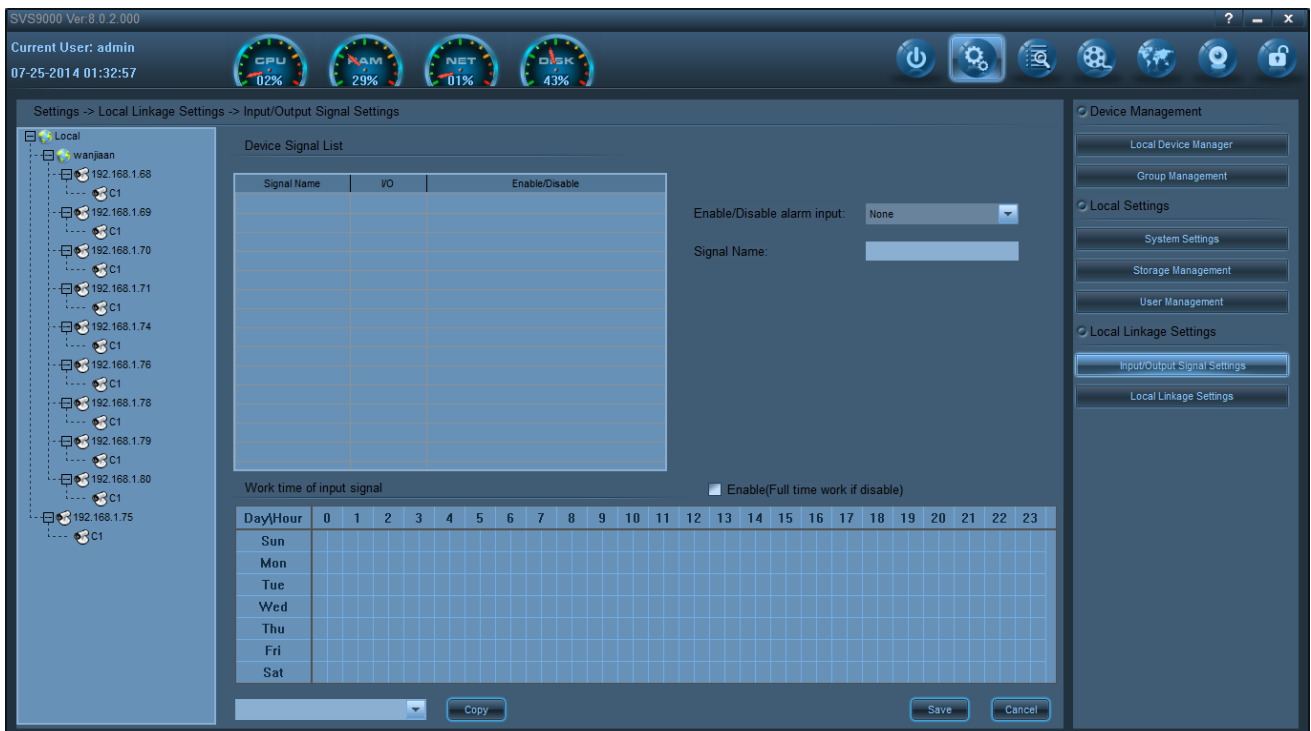
【Role Name】 must be more than six digits, not including /、 \、 :、 *、 ? 、 “、 <、 >、 | etc

4.3 Local Alarm linkage Setting

【local Alarm linkage Setting】 has two Page Function, they are **【Input and Output signal setting】** and **【Alarm linkage setting】**

4.3.1 Input and Output Signal Setting

Click **【Input and Output signal setting】** button, system will pop out diagram as below:

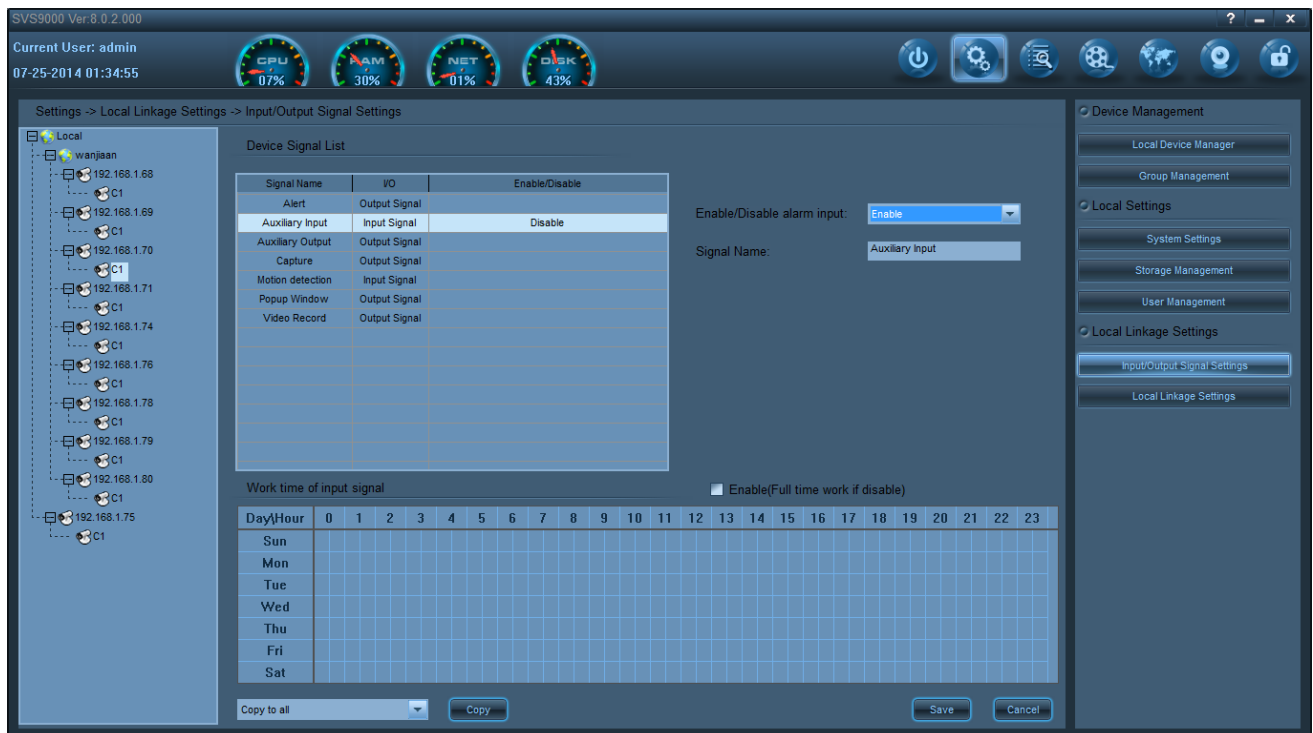


Input and Output Signal Setting: mainly the on-off alarm signal input

- 【1】** Display Device list
- 【2】** Display input and output signal on single device; Input signal mainly includes auxiliary input ,motion detection: Output signal mainly include popup video windows, linkage record, linkage snap, alarm and auxiliary output
- 【3】** Plan to open the alarm input

Process on how to open the alarm input

Step 1: Double click to select the “c1” below the IPC, for example: 192.168.1.91 there appear input and output signal in the equipment signal list. see below pic:



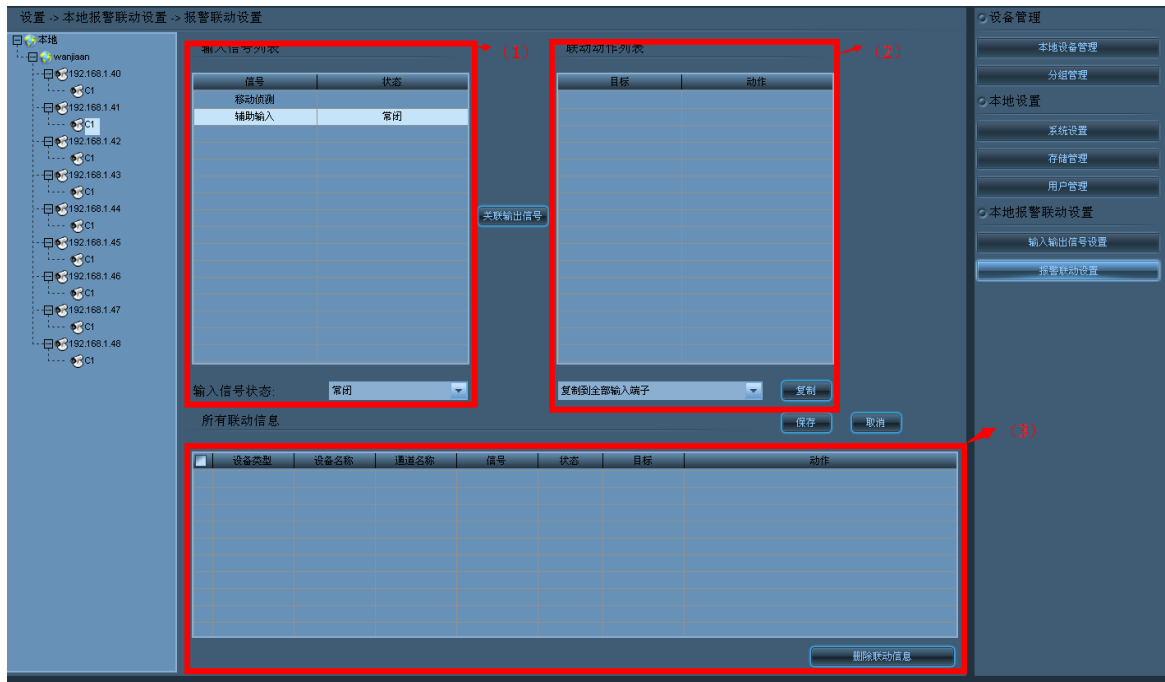
Step 2: Select input on “Motion detection”, then in the pull-down list on “ Start/Prohibit alarm input” select “start”,click “save”. Then the motion detection signal input function starts. If you need to start it within the scheduled time, you can firstly select “start”in the column “Input Signal Valid Time Segment setting”,then set the time segment. Or you can select it in the time frame.



Noted: The motion detection input signal is open by default currently, and can not shut down.

4.3.2 Action with Alarm Settings

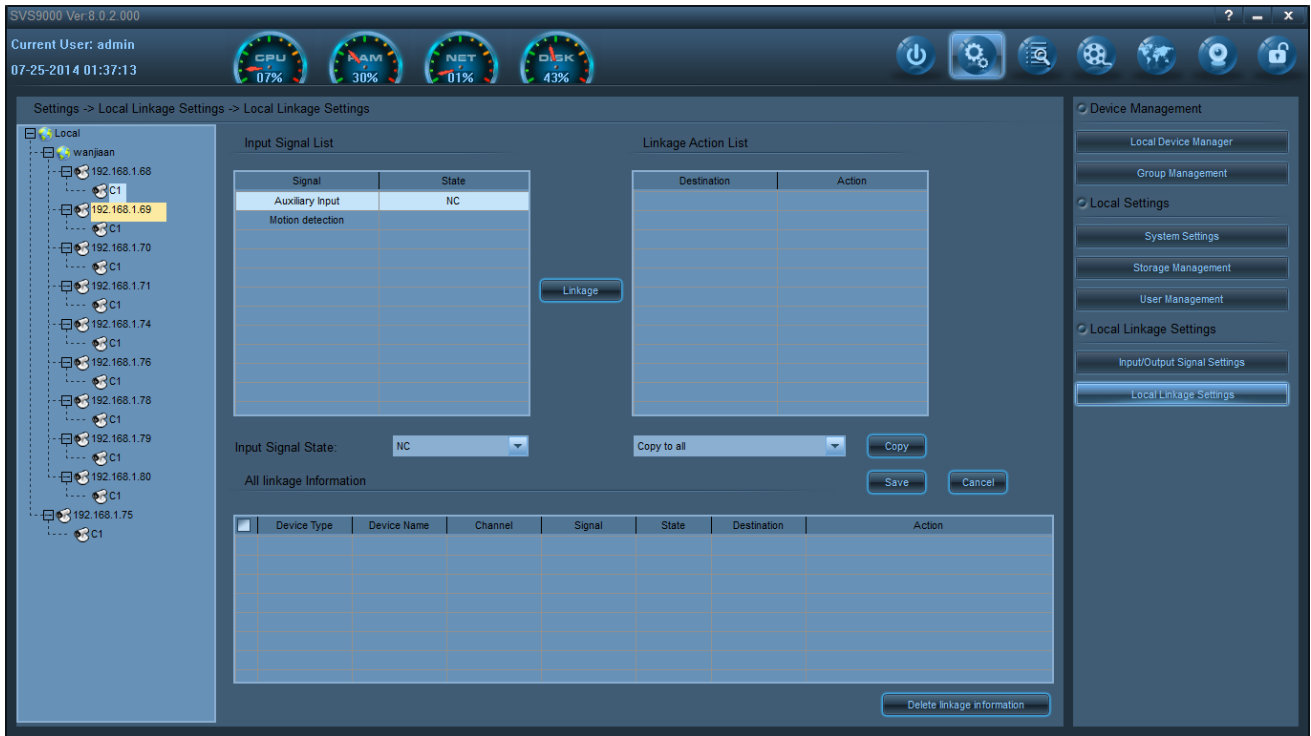
Click“action with alarm settings”, then it shows as below picture



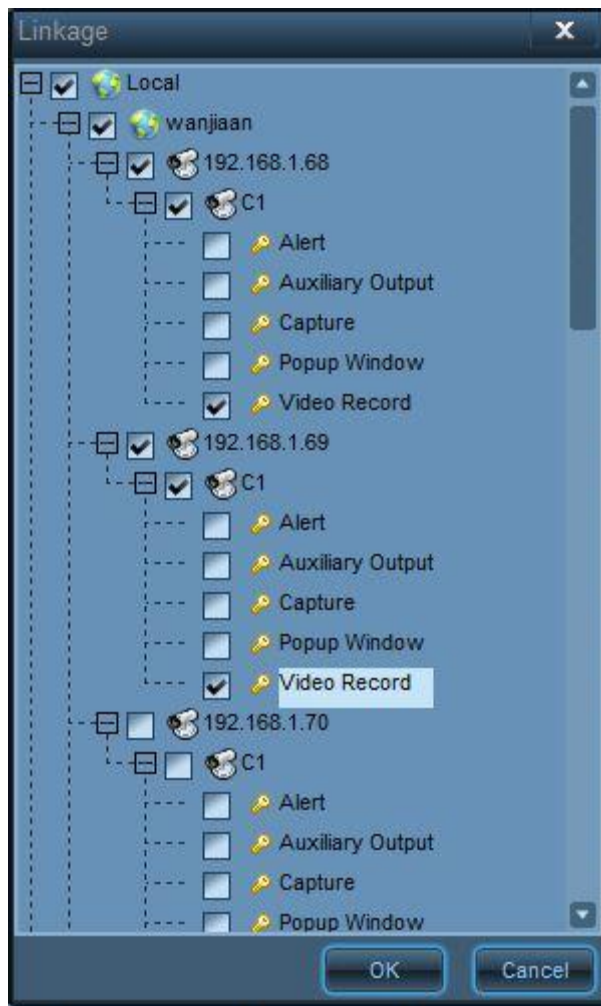
Action with alarm settings: when it alarms, it will trigger an event, the event will come into an form of video, picture grasping, elert, Auxiliary Output

- 【1】 single camera`s input signal will be displayed
- 【2】 when the camera triggered, it will display all the events
- 【3】 it will display all cameras` alerting plansprocedures for action with alarm settings:

Step 1: double click on c1, say, 192.168.1.91, the input signal will be showed in the device signal list



Step 2: select “motion detection”, click on “connected output signal”, then select the target camera and event, and click on “save”, it will set successfully as below picture shows



then, based on “all the connected information”, you can check the related info as below picture shows

<input type="checkbox"/>	Device Type	Device Name	Channel	Signal	State	Destination	Action
<input type="checkbox"/>	Camera	al-wanjaan)192.168	C1	Motion detection	NC	.wanjaan)192.168.1	Video Record
<input type="checkbox"/>	Camera	al-wanjaan)192.168	C1	Motion detection	NC	.wanjaan)192.168.1	Video Record

If you want to cancel this function, then select the connected info, then click on “delete connected info”

5 Playback

[Playback] include: Local playback, Device playback, Local backup, Server backup, as following picture:



5.1 Local Playback

Click “Local Playback”, system will pop up the interface of “Local Playback”:



Local Playback: it is the function module of playback of video recording files. It supports 4 ch playback at the same time in maximum. It can search the recording video files by date and also check the specific time by timeline. The recording video file format is H.264.

[1] It is mainly the channel of playing video recording files. It can play 4ch in maximum.

[2] This area can display all the device even if this device are not recording.

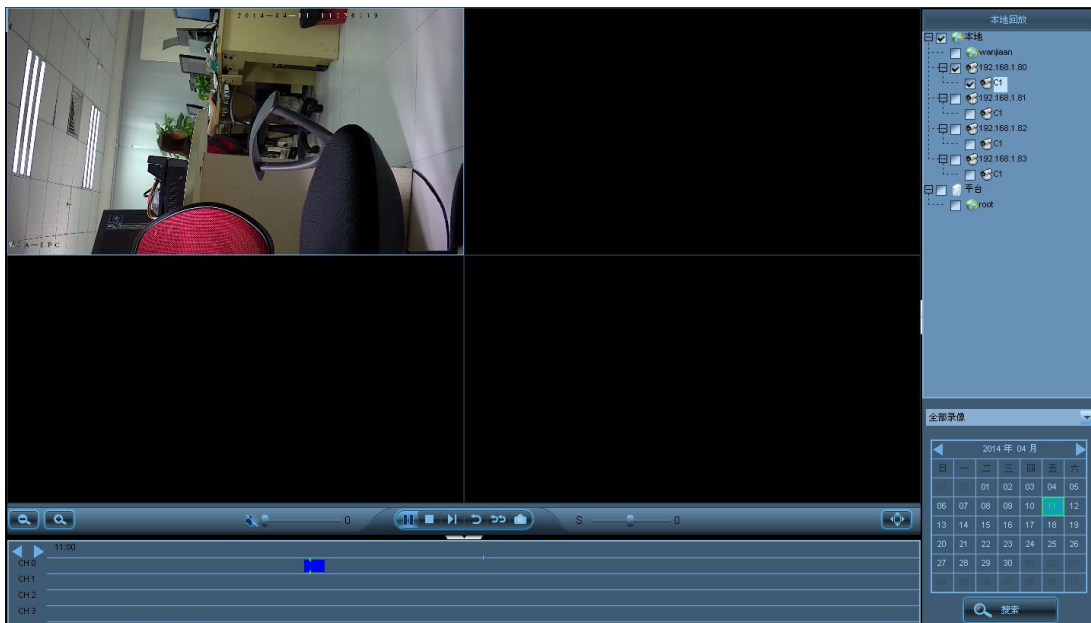
[3] This area are for video recording search. It has two kinds of recording: one is by type, include all recording, plan recording, alarm recording, manual recording; the other is by time. If this device have record files, this area will display in green color.

[4] This area are the control area of playing recording files. From the left to right,is has the function: Electronic zoom in or out, Audio volume control, Play, Stop, Single frame, Repeat play, All repeat play, Snapshot, Fast forward and Full screen,etc.

[5] It is a timeline in hours. Total is 24 hours. If the device has recording files, it will display “blue stripe”. The timeline can zoom in or out.

As follow are the steps of playing a recording files:

First step: Click and chose a device which has recording files, for example: 192.168.1.80. Chose the type “All Recording” in area [3] and 11th for the date, then click “search” button. If has recording files, the timeline will display “blue stripe”, and chose the “blue stripe”, then can play by click “play” button. Following is the picture:



It is equal to function “Log Query” in [3.4 toolbar].

It can query the log info such as login info, alarm info and connection info by choosing “ View by date”

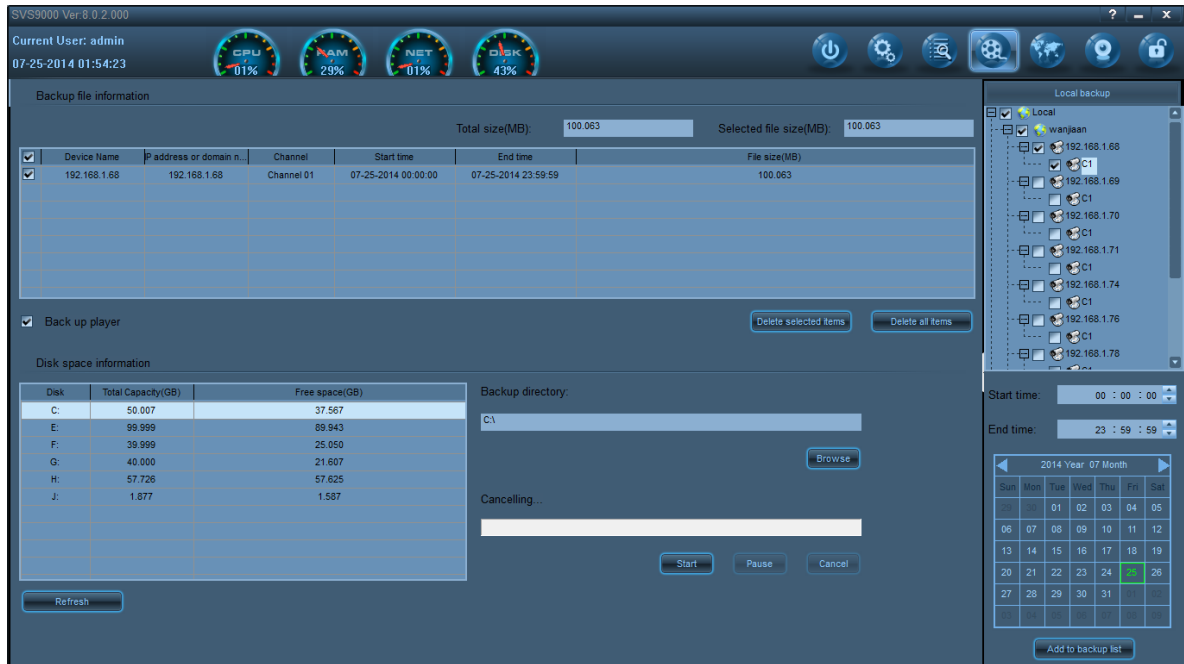
It can query the log info by choosing “View by search result”

5.2 Playback

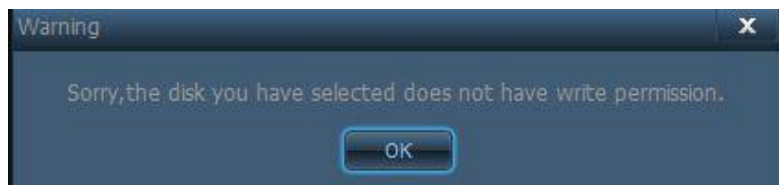
Playback: The playback is special for NVR devices, remote playing NVR video files, the module can not play the local video, the detailed operation can be reference as below:(local playback)

5.3 Local backup

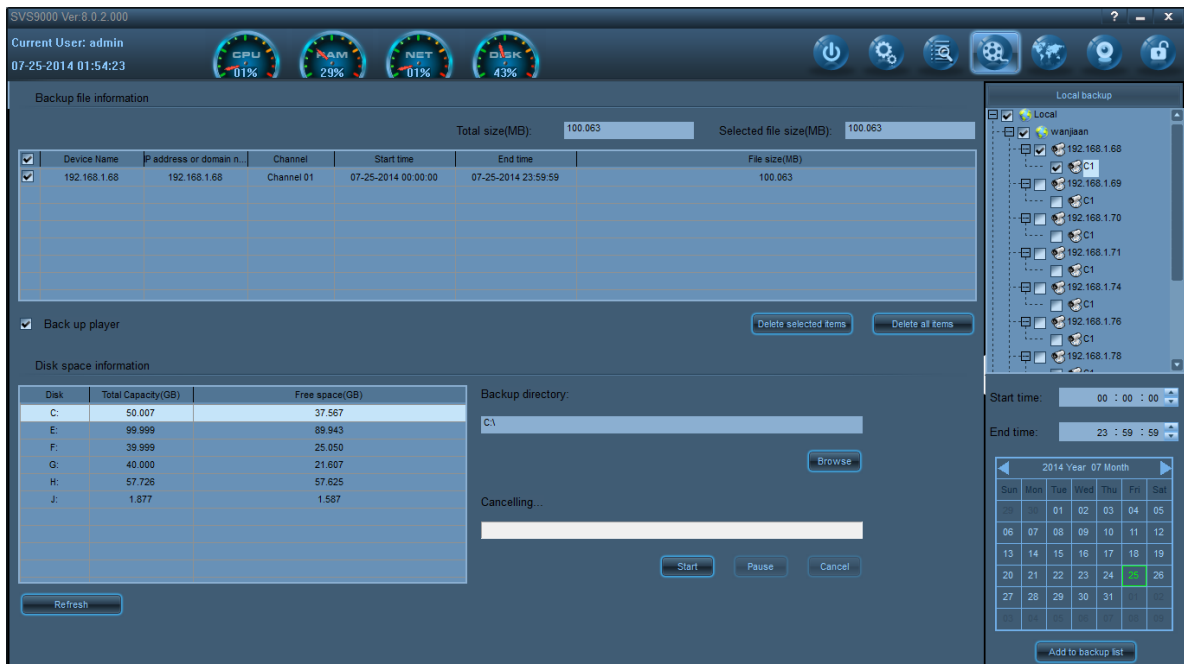
Click "local backup" button, the system pop-up [local backup] interface:



The 2nd step, select the backup file in the backup list, can be in two ways, one is full selecting; another is the custom selection, later, in "the backup directory", click "Browse" button, select the backup directory, then refer to the left "disk space information", or it will pop up the following dialog box, as below:



Click the "start" button, can suspend or cancel the operation, can be realized the backup as below:



6 Event query

[Event query] That query system log, the interface as shown below



System Event: as like a log, recording state information of Each equipment.

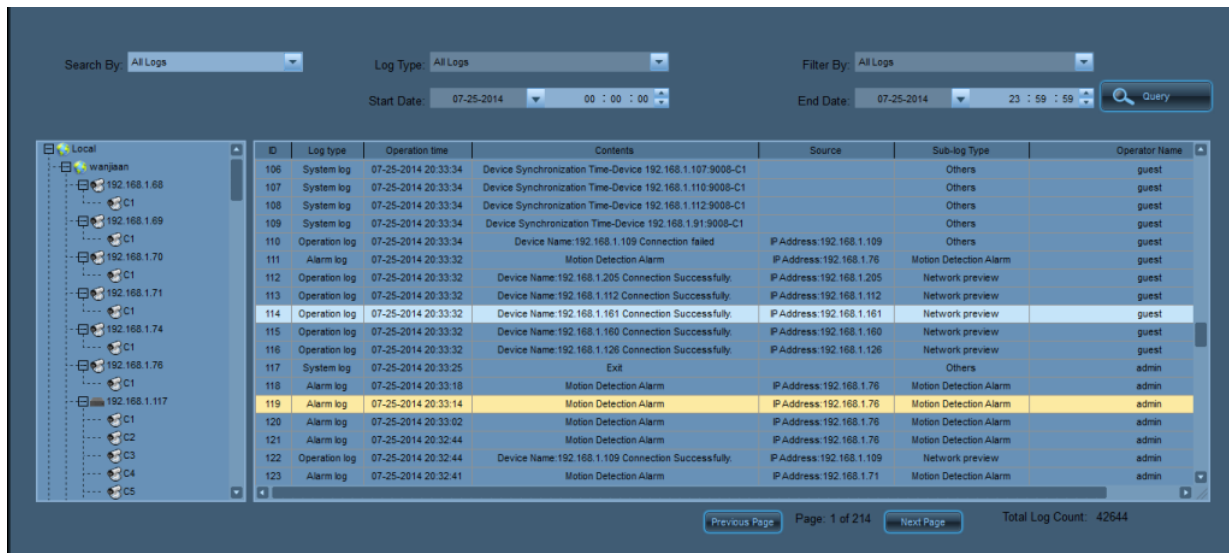
[inquiry mode] There are three kinds of query methods, Respectively as Query all the logs, according to the equipment inquiry, according to user's query.

[Log Type] There are three kinds of operation log, alarm log and system log.

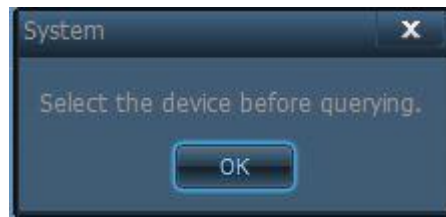
[The sub log type] Each kind of "log type" has a log of eight sub type, respectively as all query log, hard disk respectively with alarm, video loss alarm, mobile hard disk error alarm detection alarm,, speaking, reading and writing, not alarm, external alarm system and other.

Query log steps are as follows:

first step, Choose the way to "query", If you select "all query log", the "log type" and "son log type" are not optional, If you select "according to equipment query", The interface will be as below:



Secondstep: Query mode selection "according to query the device" will activate the log types and sub-types of logs and query time can be chosen according to the device query log, you must select a station designated device to search for the corresponding log, if not choose device, the device will prompt you to select



Specific operations as shown below:

Search By: Device | Log Type: System log | Filter By: All Logs | Start Date: 07-25-2014 00:00:00 | End Date: 07-25-2014 23:59:59 | Query

ID	Operation time	Contents	Sub-log Type	Operator Name
1	07-25-2014 20:33:34	Device Synchronization Time-Device 192.168.1.70-9008-C1	Others	guest
2	07-25-2014 00:13:30	Device Synchronization Time-Device 192.168.1.70-9008-C1	Others	guest

Previous Page | Page: 1 of 1 | Next Page | Total Log Count: 2

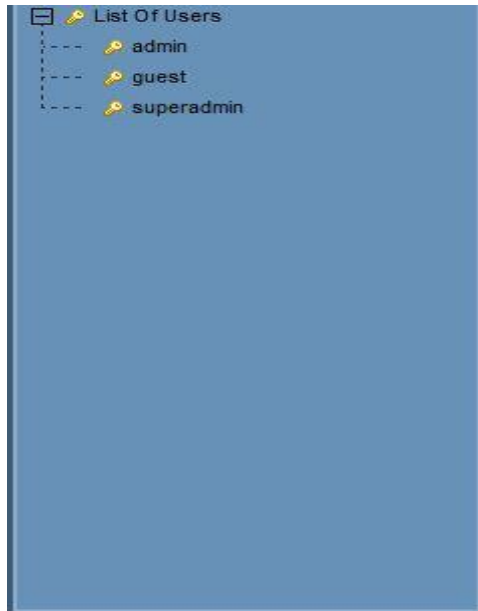
The same device, depending on the choices, check out the different logs:

Search By: Device | Log Type: Operation log | Filter By: All Logs | Start Date: 07-25-2014 00:00:00 | End Date: 07-25-2014 23:59:59 | Query

ID	Operation time	Contents	Sub-log Type	Area Name	Device Name	Channel	Operator Name
1	07-25-2014 18:33:38	Device Name:192.168.1.70 Connection Successfully.	Network preview	wanjaan	192.168.1.70	C1	admin
2	07-25-2014 01:08:42	Device Name:192.168.1.70 Connection Successfully.	Network preview	wanjaan	192.168.1.70	C1	admin
3	07-25-2014 01:08:41	192.168.1.70 IP Address:192.168.1.70 User Name:admin Port:900	Others	wanjaan	192.168.1.70	C1	admin
4	07-25-2014 00:17:30	192.168.1.70 IP Address:192.168.1.70 User Name:admin Port:900	Others	wanjaan	192.168.1.70	C1	admin
5	07-25-2014 00:13:28	Device Name:192.168.1.70 Connection Successfully.	Network preview	wanjaan	192.168.1.70	C1	guest
6	07-25-2014 00:01:54	Device Name:192.168.1.70 Connection Successfully.	Network preview	wanjaan	192.168.1.70	C1	admin
7	07-25-2014 00:01:53	192.168.1.70 IP Address:192.168.1.70 User Name:admin Port:900	Others	wanjaan	192.168.1.70	C1	admin

Previous Page | Page: 1 of 1 | Next Page | Total Log Count: 7

Third step, If you choose "according to user's query, then the interface will be as below:



Choose a user operation, check the corresponding log.

Four step, select "start time" and "end time", click "query", as bellow:

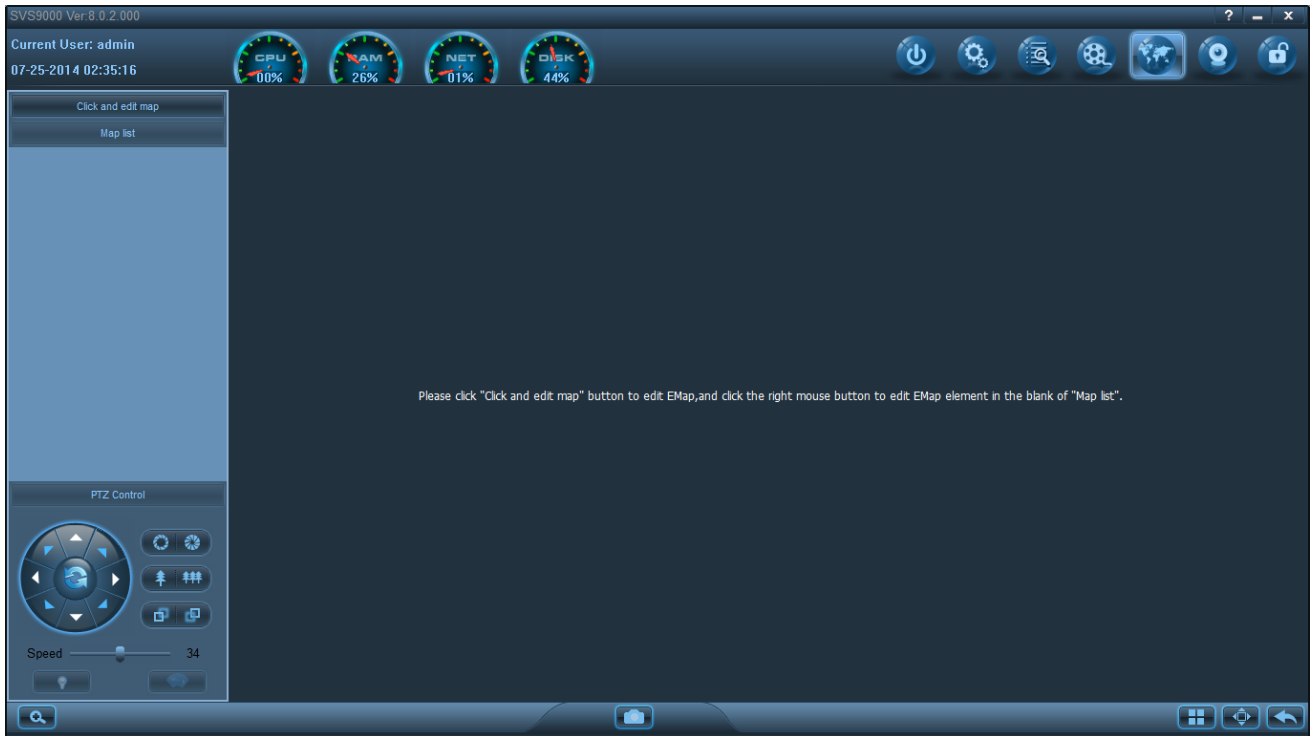
The screenshot displays the SSVS9000 Ver:8.0.2.000 interface. At the top, it shows system status indicators for CPU (00%), RAM (25%), NET (01%), and Disk (44%). Below these are navigation icons and a "System Events" label. The main area features search filters: "Search By: All Logs", "Log Type: All Logs", and "Filter By: All Logs". Date and time filters are set to "Start Date: 07-25-2014 00:00:00" and "End Date: 07-25-2014 23:59:59". A "Query" button is visible. On the left, a "List Of Users" sidebar shows "admin", "guest", and "superadmin". The main table displays log entries with columns for ID, Log type, Operation time, Contents, Source, Sub-log Type, and Operator Name. The table shows multiple "Motion Detection Alarm" entries and one "System log" entry. At the bottom, there are "Previous Page" and "Next Page" buttons, and a "Total Log Count: 3778" indicator.

ID	Log type	Operation time	Contents	Source	Sub-log Type	Operator Name
1	Alarm log	07-25-2014 02:32:22	Motion Detection Alarm	IP Address: 192.168.1.76	Motion Detection Alarm	admin
2	Alarm log	07-25-2014 02:32:17	Motion Detection Alarm	IP Address: 192.168.1.76	Motion Detection Alarm	admin
3	Alarm log	07-25-2014 02:32:12	Motion Detection Alarm	IP Address: 192.168.1.76	Motion Detection Alarm	admin
4	Alarm log	07-25-2014 02:32:07	Motion Detection Alarm	IP Address: 192.168.1.76	Motion Detection Alarm	admin
5	Alarm log	07-25-2014 02:32:03	Motion Detection Alarm	IP Address: 192.168.1.76	Motion Detection Alarm	admin
6	Alarm log	07-25-2014 02:31:59	Motion Detection Alarm	IP Address: 192.168.1.76	Motion Detection Alarm	admin
7	Alarm log	07-25-2014 02:31:55	Motion Detection Alarm	IP Address: 192.168.1.76	Motion Detection Alarm	admin
8	System log	07-25-2014 02:31:52	ystem configuration: Alarm Last Duration:30s Alarm Prerecord Time:10s Cover videos, f		Local configuration	admin
9	Alarm log	07-25-2014 02:31:51	Motion Detection Alarm	IP Address: 192.168.1.76	Motion Detection Alarm	admin
10	Alarm log	07-25-2014 02:31:46	Motion Detection Alarm	IP Address: 192.168.1.76	Motion Detection Alarm	admin
11	Alarm log	07-25-2014 02:31:41	Motion Detection Alarm	IP Address: 192.168.1.76	Motion Detection Alarm	admin
12	Alarm log	07-25-2014 02:31:36	Motion Detection Alarm	IP Address: 192.168.1.76	Motion Detection Alarm	admin
13	Alarm log	07-25-2014 02:31:32	Motion Detection Alarm	IP Address: 192.168.1.76	Motion Detection Alarm	admin
14	Alarm log	07-25-2014 02:31:27	Motion Detection Alarm	IP Address: 192.168.1.76	Motion Detection Alarm	admin
15	Alarm log	07-25-2014 02:31:23	Motion Detection Alarm	IP Address: 192.168.1.76	Motion Detection Alarm	admin
16	Alarm log	07-25-2014 02:31:20	Motion Detection Alarm	IP Address: 192.168.1.71	Motion Detection Alarm	admin
17	Alarm log	07-25-2014 02:31:19	Motion Detection Alarm	IP Address: 192.168.1.76	Motion Detection Alarm	admin
18	Alarm log	07-25-2014 02:31:14	Motion Detection Alarm	IP Address: 192.168.1.76	Motion Detection Alarm	admin

If there are too much log, you can also click on the "previous page" and "next page", to query more log.

7 Electronic Map

Click the [map], as shown below



Electronic map: The system could be deployment the front by the electronic map ,could be review the installed camera and display the alarm equipment based on electronic map navigation mode .

[1] shows a list of all the map to be added

[2] please refer to [3.7.5].

[3] map preview panel.

[4] IPC function button,Electronic amplification, capture, preview window control, full screen, return. (from left to right)

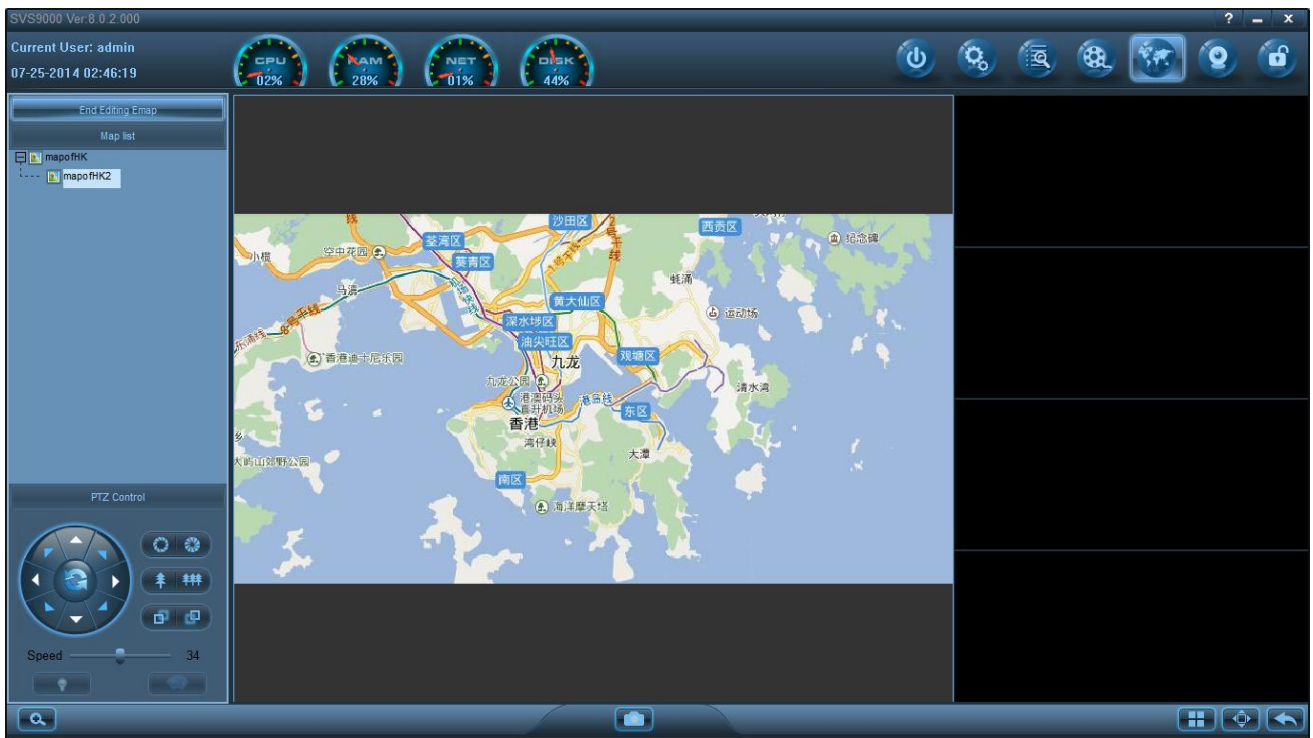
7.1Creat map

Open the edit function of electronic map, click "Edit map", in the "map" list, right click, select "add", as shown below:



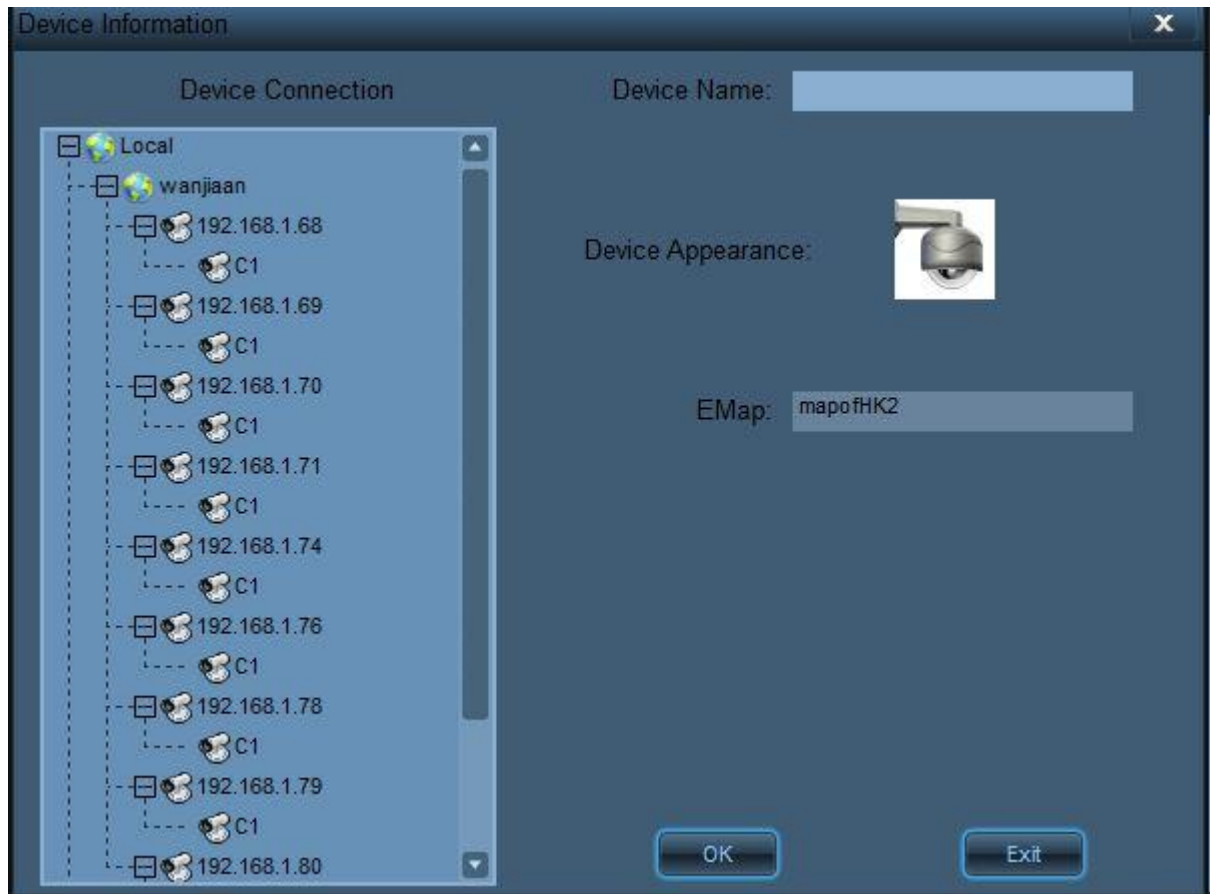
Among them, "the map name" cannot contain /, \, :, *, ? , " , < , > , | character,"

Its needn't to fill this item , click" Browse " , add the required map from the local hard disk (.Jpg,.Bmp,.Png format), can create a map, as shown below:

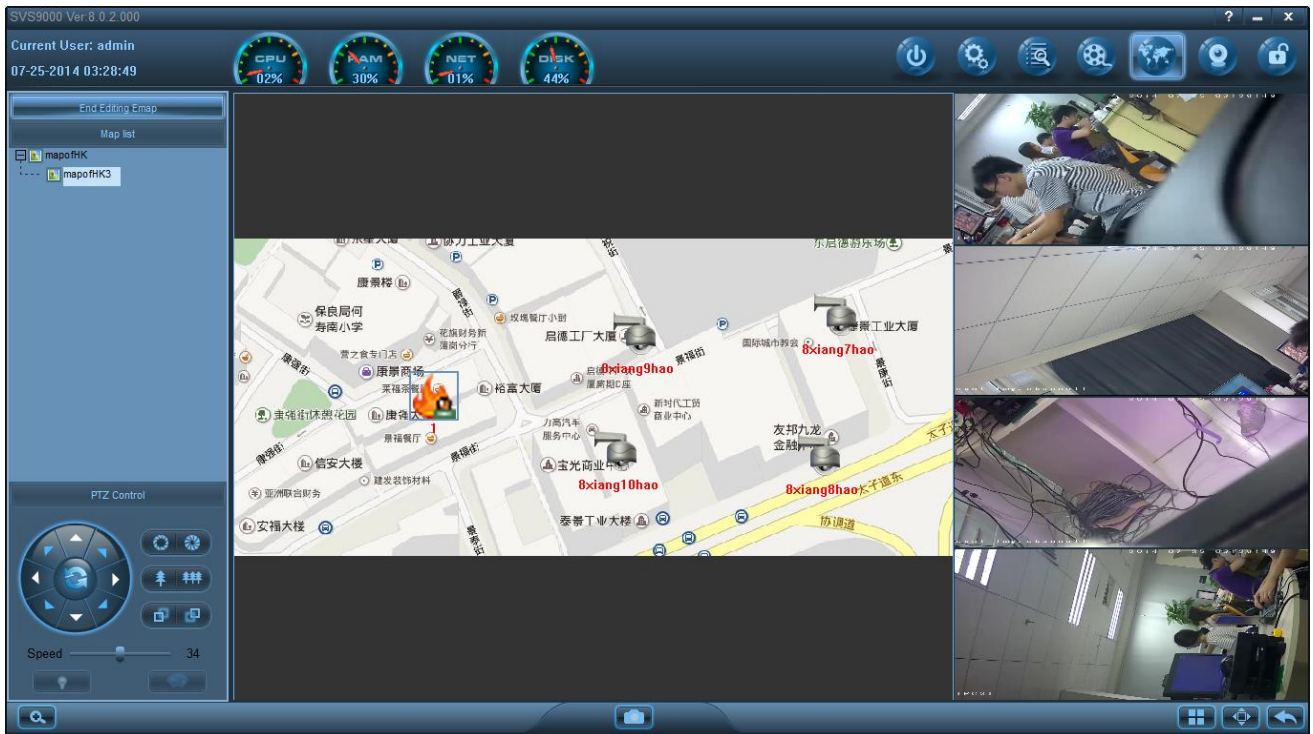


7.2 IPC Location settings

In the map preview pane, click mouse on the right, in the pop-up dialog box, select "Add Device", as shown below:



Then, in the "DeviceConnection" column, select the IPC devices, and name the IPC in the "Device Name", click on "OK", for a preview of the IPC, double-click the device in the right area to preview, as shown below:

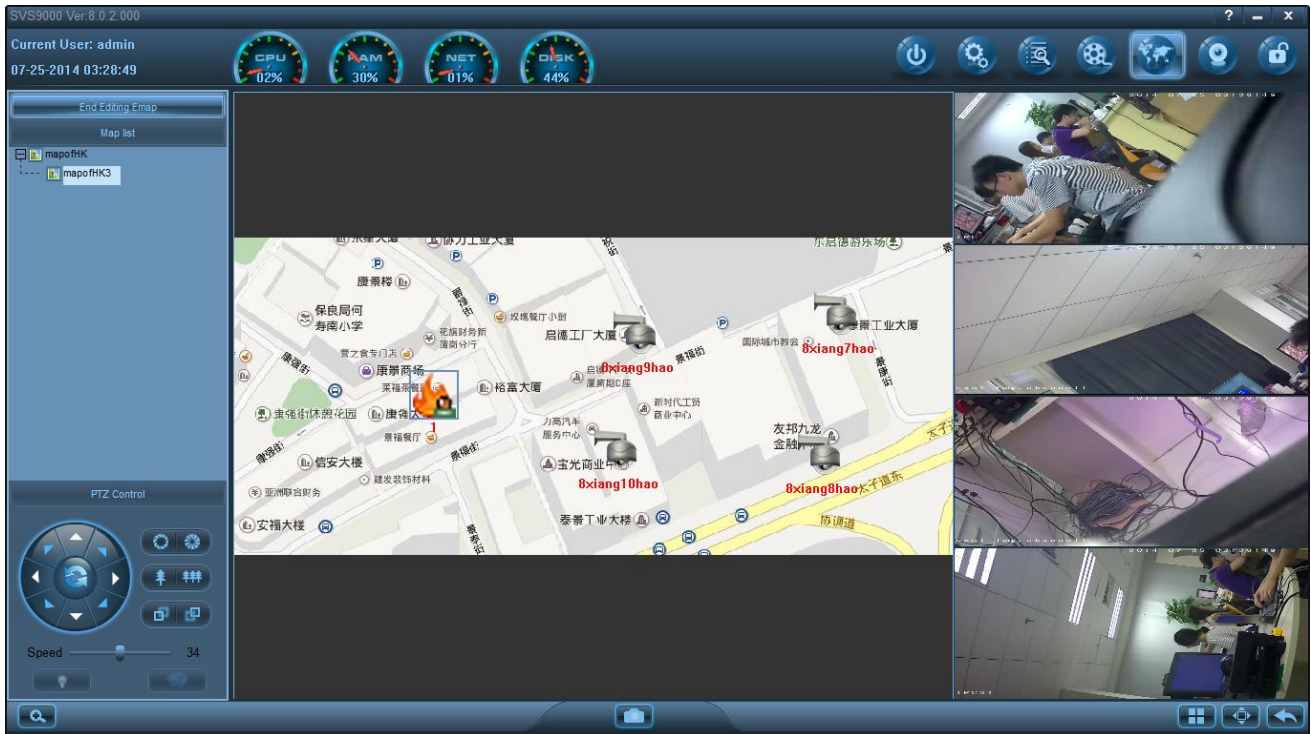


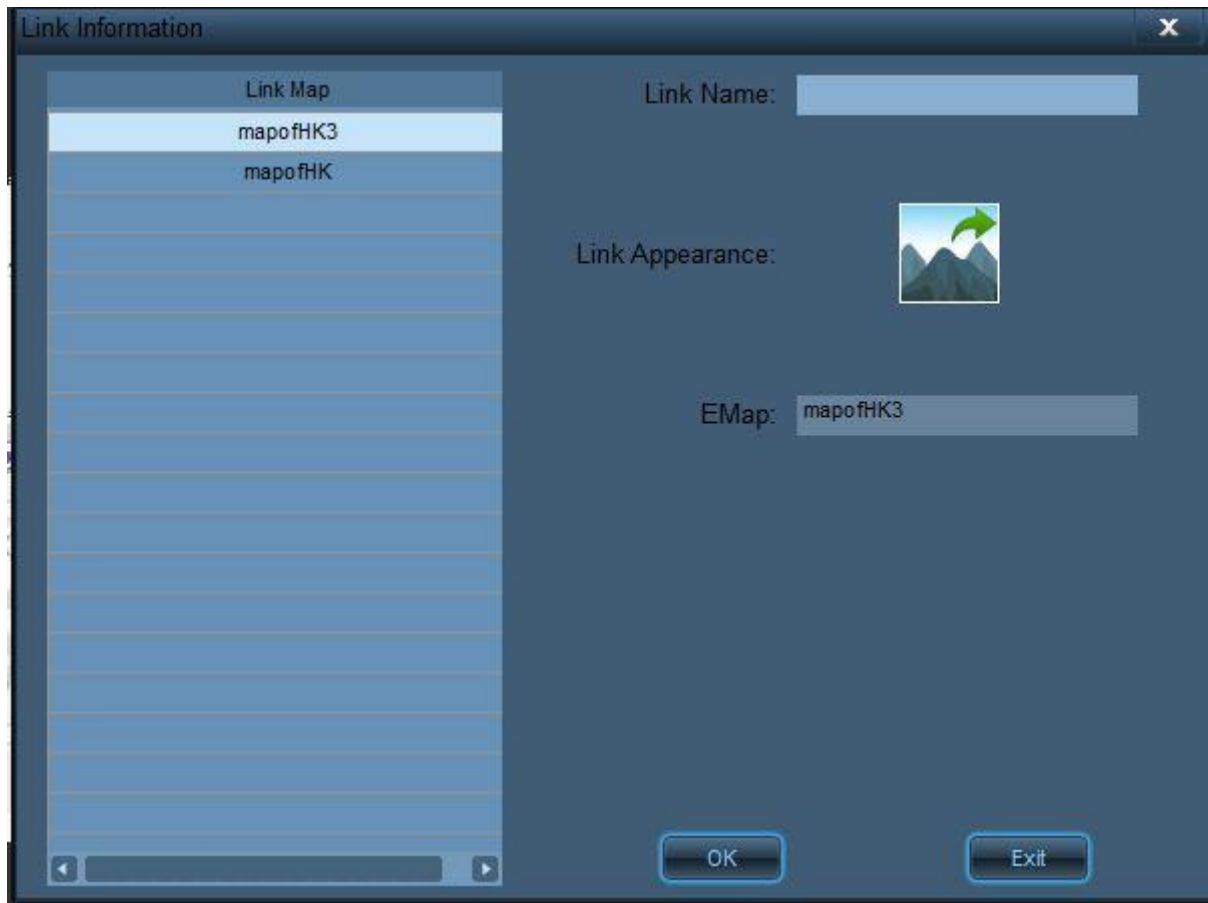
Customer can view 4 channels at the same time.

7.3 Map level settings

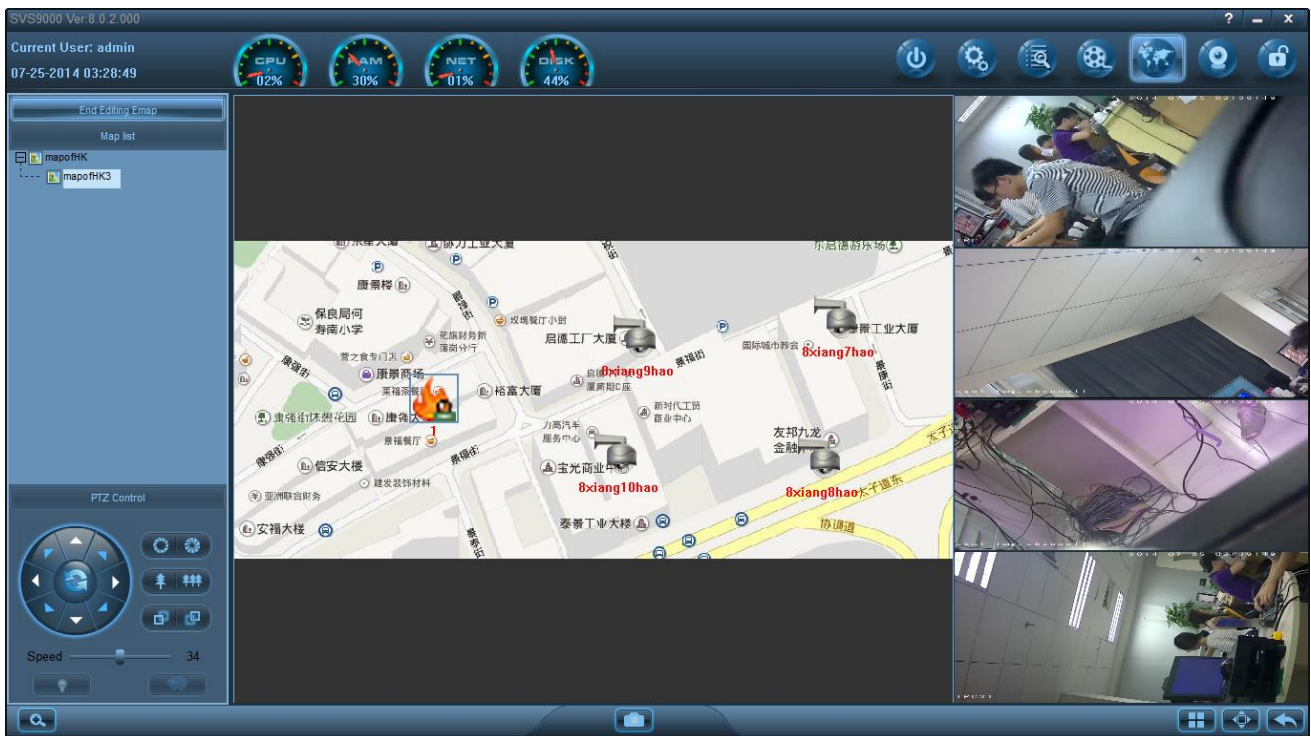
Support for multiple electronic map overlay function, can be achieved level map display.

In the map editor, as were a number of new maps have been added to create an electronic map of the link and save it to form the map hierarchy (multi-level map). Meanwhile, in the "map list", the "My Maps" will appear on the lower level of the relationship between the map. In the editor, double-click the name to edit electronic map, or on the map has been created to link another map, you can also switch to a different map, as shown below:



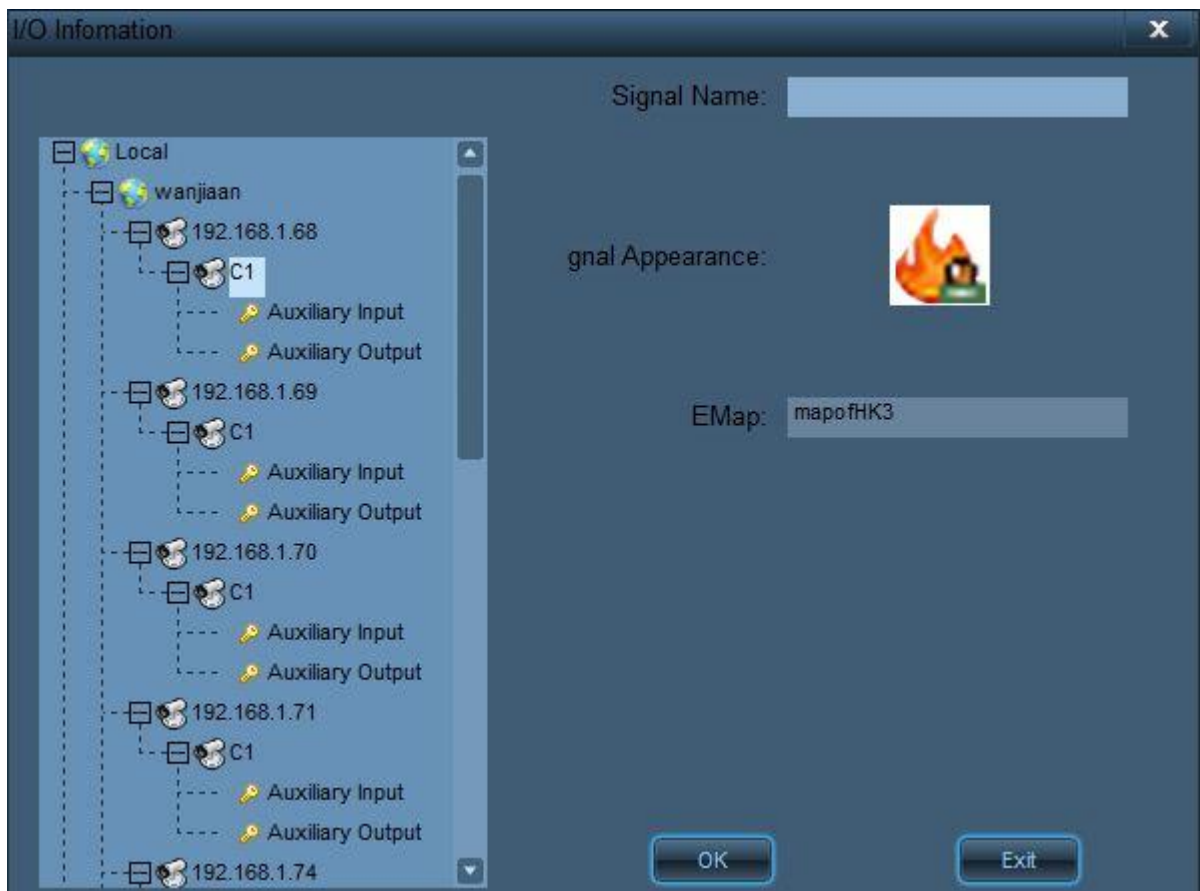
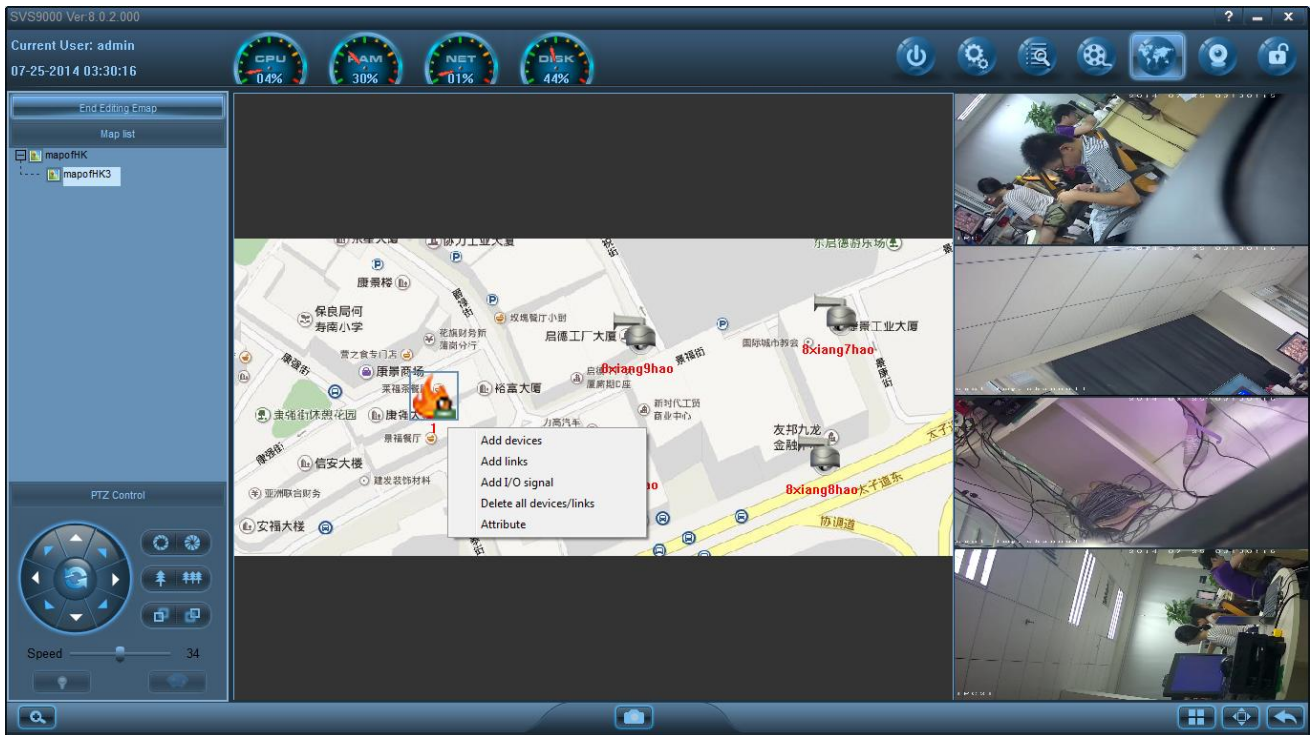


On 11mapscreeenthelink33maps, name as "1133", after which you can click on the name "1133" icon, 33map image will be showed, as shown below:



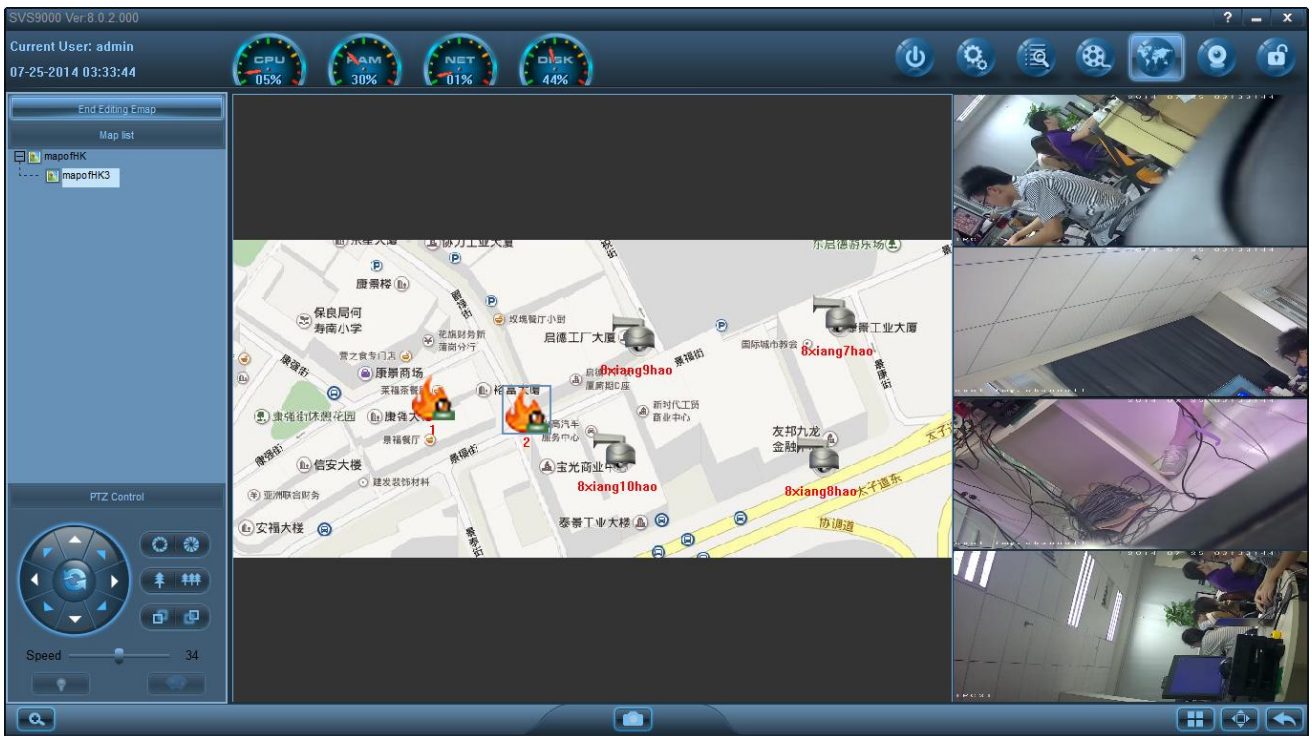
7.4 Alarm input setting-up Settings

Preview pane on the map, right click, in the pop-up dialog box, select add input and output signals, the following figure



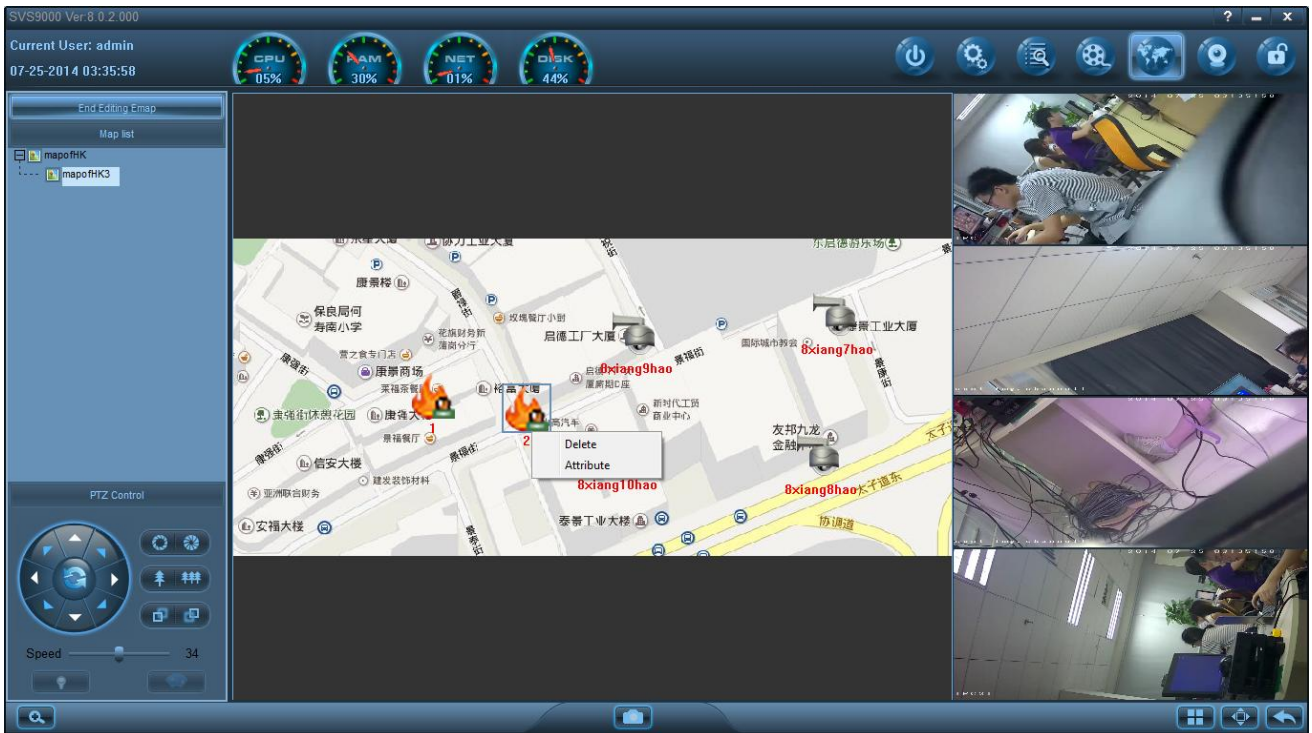
Set in the input and output signal information bar, choice, to wash the IPC equipment, and the name of the signal for device name, click ok, the following

figure



7.5 Delete layout point

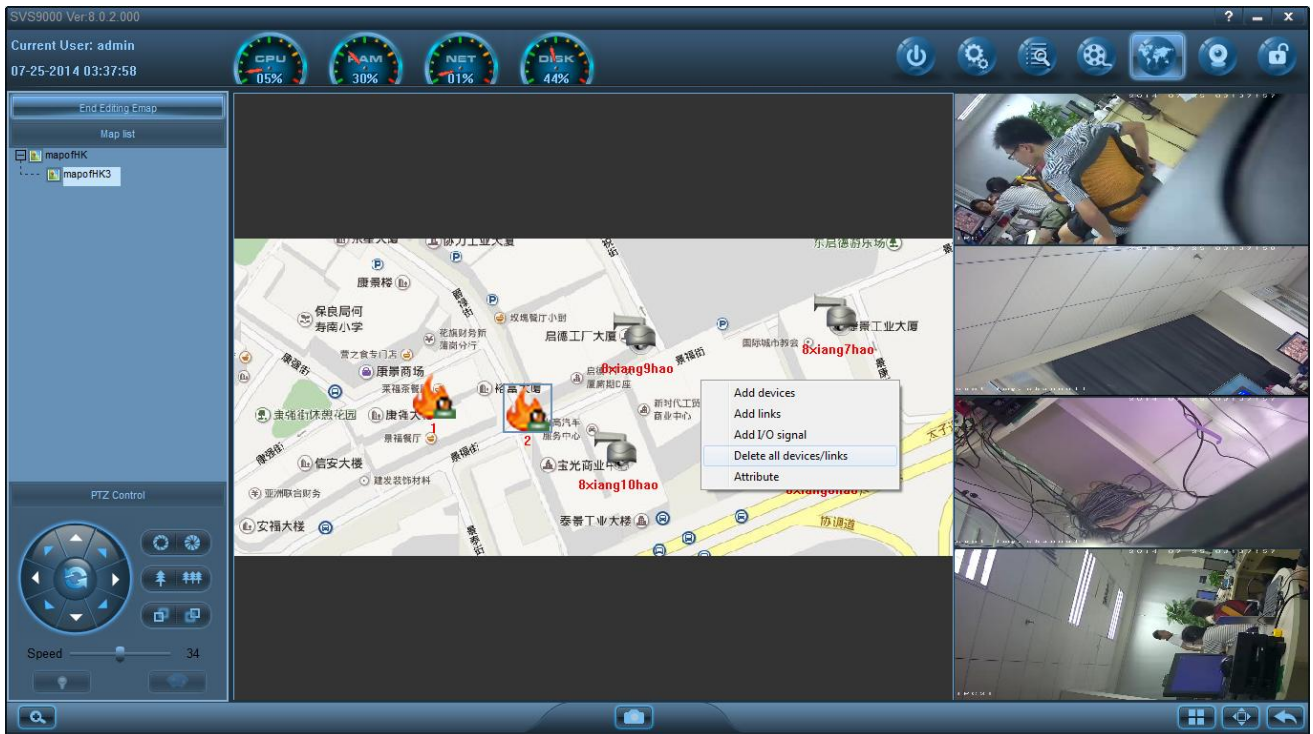
“Device to connect input and output signal and the map link, can through the following steps, to delete



Such as the need to decorate a delete all points, can the blanks on the map, right click and select delete all

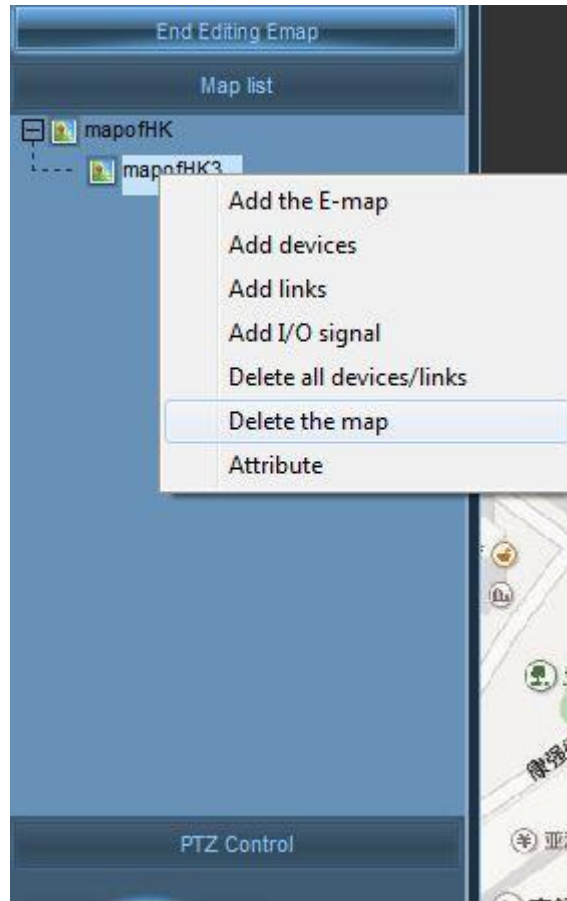
equipment/links, can be deleted, the diagram

below



7.6 Delete electronic map

In map list, choose to delete map, right-click and choose delete maps, the following figure



Appendix-FAQ

1-1 How to set Auto-Login for SVS 9000?

Save ID and password; to turn automatic login SVS 9000, at [3.1], check [Remember] checkbox; cancel automatic login, remove the check.

1-2 How to set to start automatically?

To run the boot automatically login SVS 9000, in [4.2.1], select the [boot] checkbox to automatically run; cancel automatic login, you can remove the tick.

1-3 [Device in the group] not search devices?

Possible cause: Since SVS 9000 software uses a broadcast protocol for inter-network search device network information, and the firewall is not allowed by the multicast packets, resulting in network information search less equipment.

Solution: The firewall is turned off.

1-4 Images are not displayed properly, how to solve?

Possible Cause 1: The system issues, Direct X feature is not enabled, will cause slow display of images and color rarely possible reasons; 2: hardware problems, the graphics card does not support hardware graphics acceleration

and scaling functions. (Hardware issues only replace the card)

Workaround: Install DirectX graphics driver, and then open the Start menu, type dxdiagrun command to enable DirectX function.

1-5 No sound when listening?

Possible reason 1: No audio input?

Solution: Check the host audio connections.

Possible reason 2: The device does not open the channels of audio options?

Solution: Check the device audio parameter settings to see whether to open the audio.