

Conflicting Rules G+ Follow 9.7k

Chapter

[Conditional Formatting](#)

Learn more, it's easy

[Manage Rules](#)

[Data Bars](#)

[Color Scales](#)

[Icon Sets](#)

[New Rule](#)

[Find Duplicates](#)

[Shade Alternate Rows](#)

[Compare Two Lists](#)

[Conflicting Rules](#)

[Checklist](#)

Download Excel File

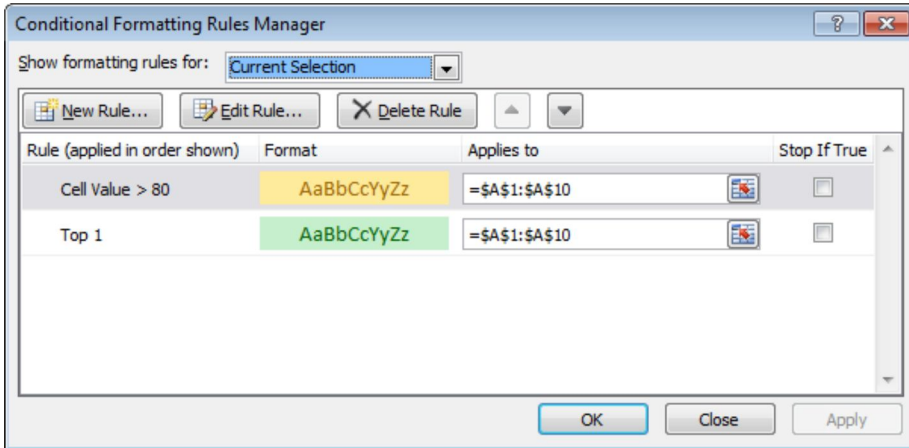
[conflicting-rules.xlsx](#)

Follow Excel Easy



Sometimes multiple conditional formatting rules in Excel conflict. A higher rule always wins. This example illustrates two different results.

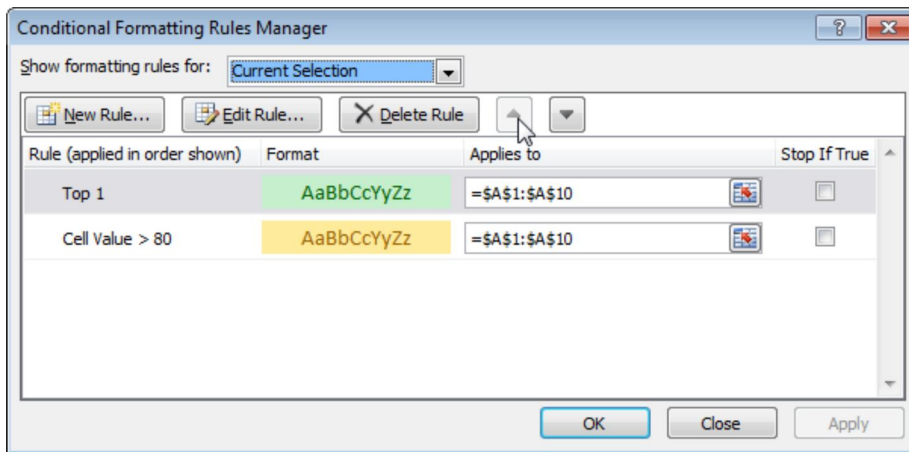
1. The value 95 is higher than 80 but is also the highest value (Top 1). The formats (yellow fill vs green fill and yellow text color vs green text color) conflict. A higher rule always wins. As a result, the value 95 is colored yellow.



Result:

	A	B	C
1	81		
2	6		
3	39		
4	43		
5	2		
6	95		
7	5		
8	11		
9	86		
10	57		
11			
12			

2. Move the second rule up. The value 95 is the highest value (Top 1) but is also higher than 80. The formats (green fill vs yellow fill and green text color vs yellow text color) conflict. A higher rule always wins. As a result, the value 95 is colored green.



Result:

	A	B	C
1	81		
2	6		
3	39		
4	43		
5	2		
6	95		
7	5		
8	11		
9	86		
10	57		
11			
12			

Note: only use the Stop If True check boxes for backwards compatibility with earlier versions of Microsoft Excel.

Do you like this free website? Please follow us on Google+



Learn more about conditional formatting, use the side menu >>

Go to Top: [Conflicting Rules](#) | Go to Next Chapter: [Charts](#)