

# Text to Columns



Follow

9.7k



To separate the contents of one Excel cell into separate columns, you can use the 'Convert Text to Columns Wizard'. For example, when you want to separate a list of full names into last and first names.

1. Select the range with full names.

	A	B	C	D	E	F	G	H
1	Brady, Tom							
2	Manning, Peyton							
3	Peterson, Adrian							
4	Lewis, Ray							
5	Reed, Ed							
6	Polamalu, Troy							
7	Johnson, Andre							
8	Revis, Darrelle							
9	Brees, Drew							
10	Peppers, Julius							
11								
12								

## Chapter

[Text Functions](#)

## Learn more, it's easy

[Separate Strings](#)
[Number of Instances](#)
[Number of Words](#)
[Text to Columns](#)
[Lower/Upper Case](#)
[Remove Unwanted Characters](#)
[Compare Text](#)
[Find vs Search](#)
[Substitute vs Replace](#)

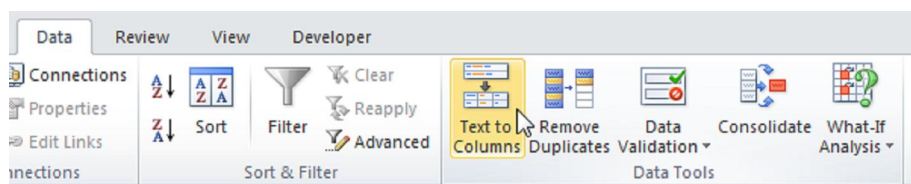
## Download Excel File

[text-to-columns.xls](#)

## Follow Excel Easy

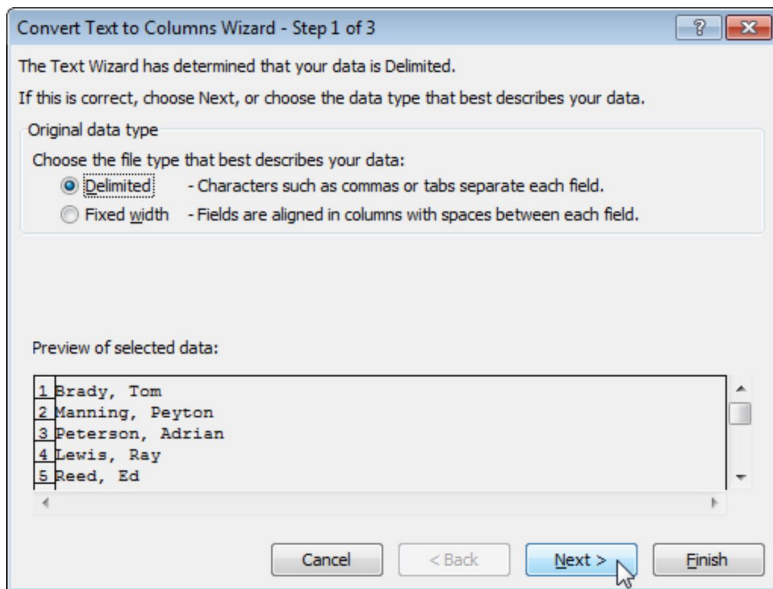


2. On the Data tab, click Text to Columns.



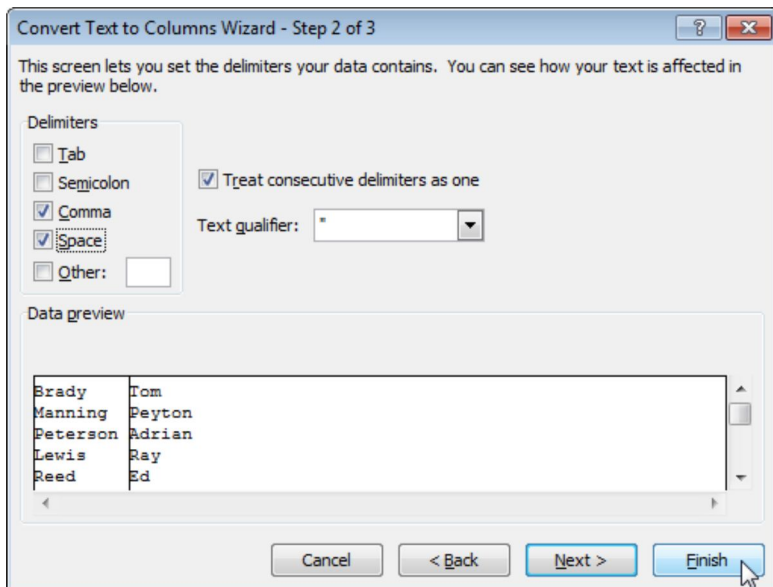
The following dialog box appears.

3. Choose Delimited and click Next.



4. Clear all the check boxes under Delimiters except for the Comma and Space check box.

5. Click Finish.

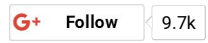


Note: This example has commas and spaces as delimiters. You may have other delimiters in your data. Experiment by checking and unchecking the different check boxes. You get a live preview of how your data will be separated.

Result:

	A	B	C	D	E	F	G	H
1	Brady	Tom						
2	Manning	Peyton						
3	Peterson	Adrian						
4	Lewis	Ray						
5	Reed	Ed						
6	Polamalu	Troy						
7	Johnson	Andre						
8	Revis	Darrelle						
9	Brees	Drew						
10	Peppers	Julius						
11								
12								

Do you like this free website? Please follow us on Google+



---

**Learn more about text functions, use the side menu >>**

Go to Top: [Text to Columns](#) | Go to Next Chapter: [Lookup & Reference Functions](#)

---

---

COPYRIGHT (C) 2010-2015 WWW.EXCEL-EASY.COM. ALL RIGHTS RESERVED.  
EXCEL 2010 TUTORIAL | HOW TO EXCEL | MICROSOFT EXCEL 2010 | EXCEL MACRO